



Development of the University of Latvia Campus in Riga City Environment

Indriķis Muižnieks, Uģis Šēnbergs,

September 2009

**OECD IMHE Meeting,
Higher Education Spaces and Places, Riga, December 6 – 8, 2009**

The University and the City

Retrospective

from Distrust to Assistance and Partnership

Current Status

Opportunities in Crisis

Future Perspectives

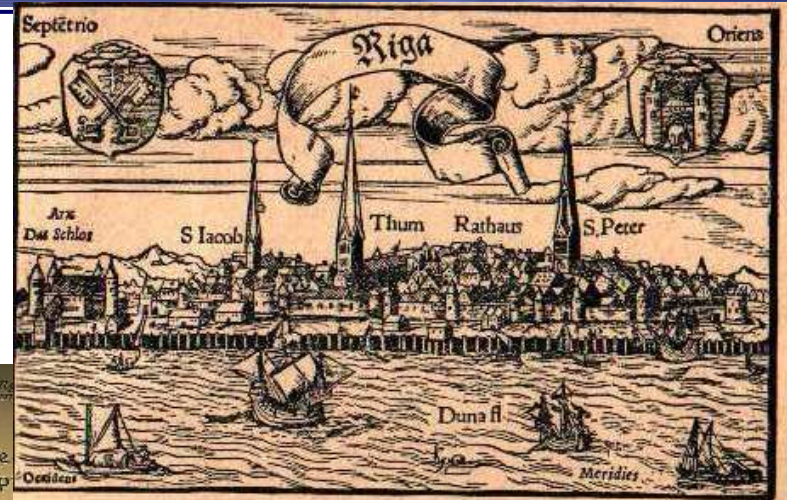
Campus of Innovation

Scheduled Timeline

Welcome to the Opening Party, September 2014

Retrospective

Riga was officially founded in 1201 in place of former local fishermen's village and Viking port in the mouth of the river Daugava. Already in the 14-th century Riga was the chief city of the Saxony, Thuringia, Brandenburg **Circle** of Hanseatic Cities



Albert Buxhoevden (~1165-1229)
Bishop Albert

Initiative of Riga City Council, 1862: Riga Polytechnics

163

2



1858

Tartu

1621

Riga

1583

Vilnius

1802

(1569) 1589



Year	Citizens in Riga	Students in Latvia	Students at LU	
1867	103 000	76		Russian Empire
1880	169 000	565		
1897	282 000	1 753		
1913	518 000	2 100		
1920	185 000	1 300	1 300	Independent republic
1930	378 000	7 800	7 800	
1940	354 000	9 900	7 900	
1950	482 000	14 200	8 000	Soviet Union
1960	580 000	21 600	5 000	
1970	732 000	40 800	8 000	
1980	836 000	47 200	12 000	
1990	910 000	46 000	13 500	
2000	810 000	89 500	30 000	Independent republic (EU)
2008	730 000	125 300	22 000	
2018	780 000	70 000	20 000	

UNIVERSITY OF LATVIA (LU)

Constitutional Assembly
Rector, Senate

UNIVERSITY FOUNDED LEGAL ENTITIES	„CORE UNIVERSITY”	UNIVERSITY AGENCIES
---	-------------------	------------------------

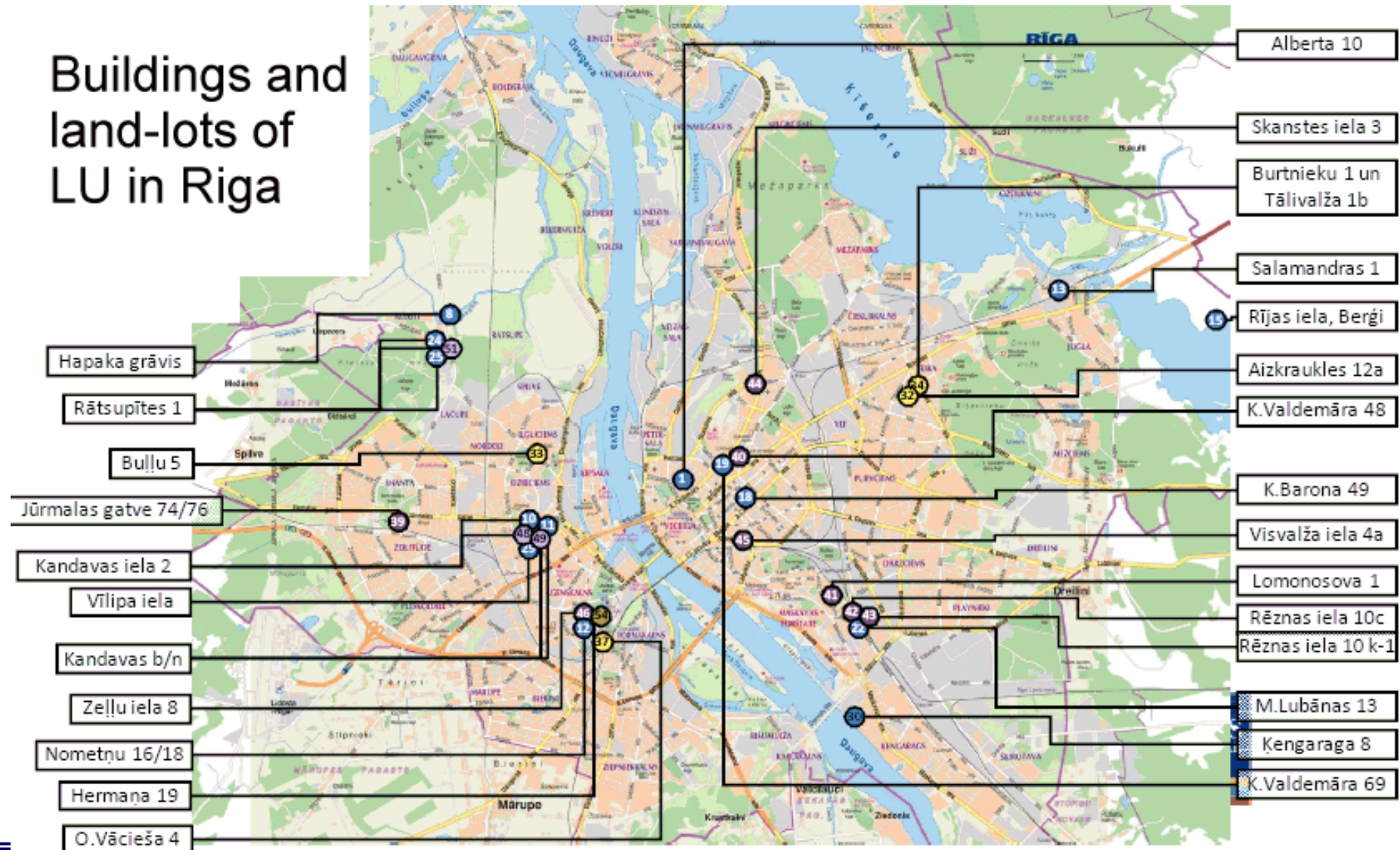
LU Foundation
LU Real Estate
Agency
Companies with the
LU participation

13 Faculties
6 Research Institutes
2 Libraries
Research and Study
Centres
Botanical Garden
Administration

9 Research
Institutes
2 Colleges

Jan, 2009: 15 000 FT students (all levels); 7 000 PT students, 800 acad. staff at “core”; 800 acad staff in agencies; 1200 general staff,

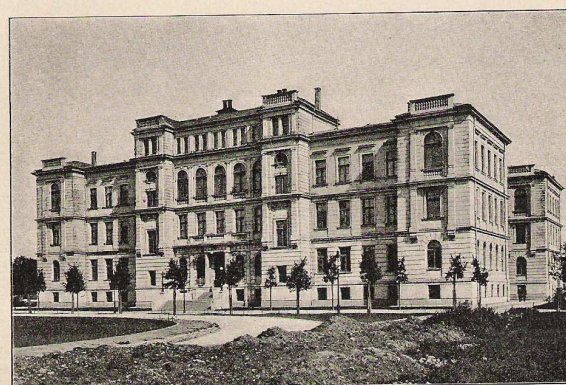
Buildings and land-lots of LU in Riga



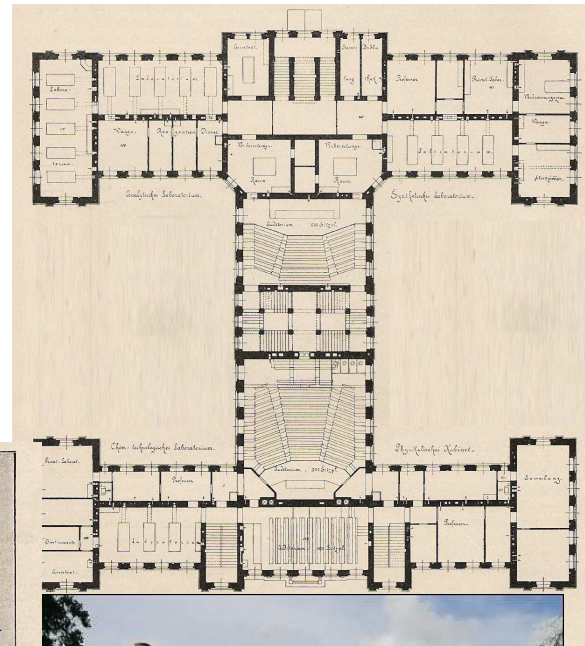
Student and program distribution in the buildings of the University of Latvia

Address	Floor space, m ²	Study programs	FT number	Distance from R19	Ownership	History
Alberta iela 10	2 400	geography, geology, envi. science	700	15 min walk	owned by LU	Gymnasium, late XIX cent. no possibilities for extension
Aspazijas bulvāris	14 300	business, management	4 380	5 min walk	possessed by LU	Former Central post office, late XIX - mid XX cent. ,no possibilities for extension
Brīvības bulv. 32	2 500	history, philosophy	600	5 min walk	used by LU	Dwelling house, late XIX century, no possibilities for extension
Jūrmalas gat. 74/76	11 113	teacher training	1 450	30 min publ. traffic	possessed by LU	Various buildings, mid XIX - mid XX cent., unfinished construction, good possibilities for extension
K.Valdemāra iela 48	5 300	chemistry, pharmacology	620	20 min walk.	possessed by LU	Gymnasium, 1930-ties, minimal possibilities for extension
Kronvalda bulvāris 4	7 600	biology, chemistry	330	10 min walk	owned by LU	University laboratory building (1900), partially reconstructed, no possibilities for extension
Lomonosova iela 1	8 400	social and political science	980	15 min publ. traffic	possessed by LU	Lecture halls of former Aviation university (AU) , 1960-ties/ 70-ties, part of complex of AU buildings
Raiņa bulvāris 19	15 000	computer science, law, theology	1 800	NR	owned by LU	University, mid XIX - mid XX cent., renovation nearly complete, no possibilities for extension
Šarlotes iela 1	1 500	medicine	610	20 min walk	used by LU	Office building, 1930-ties, no possibilities for extension
Visvalža iela 4a	5 800	philology	1 640	15 min walk	possessed by LU	High school, 1970-ties, limited possibilities for extension
Zeļļu iela 8	7 022	physics, mathematics	640	15 min publ. traffic	possessed by LU	Various buildings, mid XIX - mid XX cent., possibilities for ca. 2500 m ² extension

Only two of the LU buildings are constructed specifically for the needs of the university



Das Laboratoriumsgebäude des Polytechnikums.



Scattered spatial infrastructure of the LU hinders efficient implementation of the fundamental tasks of the University:
studies;
research work and creative activities;
innovation, provision of services to the society

LU buildings do not comply to the current demands of the students and researchers. They can be refurbished only at expenses that exceed new construction.

LU is not in position to be competitive in the international market of higher education, research and innovation unless fundamental modernisation of its spatial infrastructure takes place.

In the year 2018 at LU there will be:

- ca. 16 000 FT students;
- ca. 2000 academic staff (including research institutes);
- ca. 1500 other staff.

Some growth of student number in comparison with the year 2009 is expected in sciences and humanities; decrease in student numbers – in social sciences, teacher training, computer science. PT students and distance learning will share the resources with FT studies.

Search for the placement of the central campus





LU and Riga City Council – Partners in Development

June 2, 2003

Cooperation Agreement between Riga City Council (RCC) and LU;

August 15, 2008

**Letter of From RCC confirming support for the development of LU
Campus in Torņakalns;**

March 5, 2009

**Agreement between RCC and LU on cooperation at the development
of Torņakalns location**

**August 11, Cabinet of Ministers, Republic of Latvia, endorses the
plans of development of LU in Torņakalns**

DEVELOPMENT OF NEW UNIVERSITY CAMPUS

**DEVELOPMENT OF NEW CAMPUS
OF UNIVERSITY OF LATVIA
IN TORŅKALNS**

DEVELOPMENT OF NEW UNIVERSITY CAMPUS



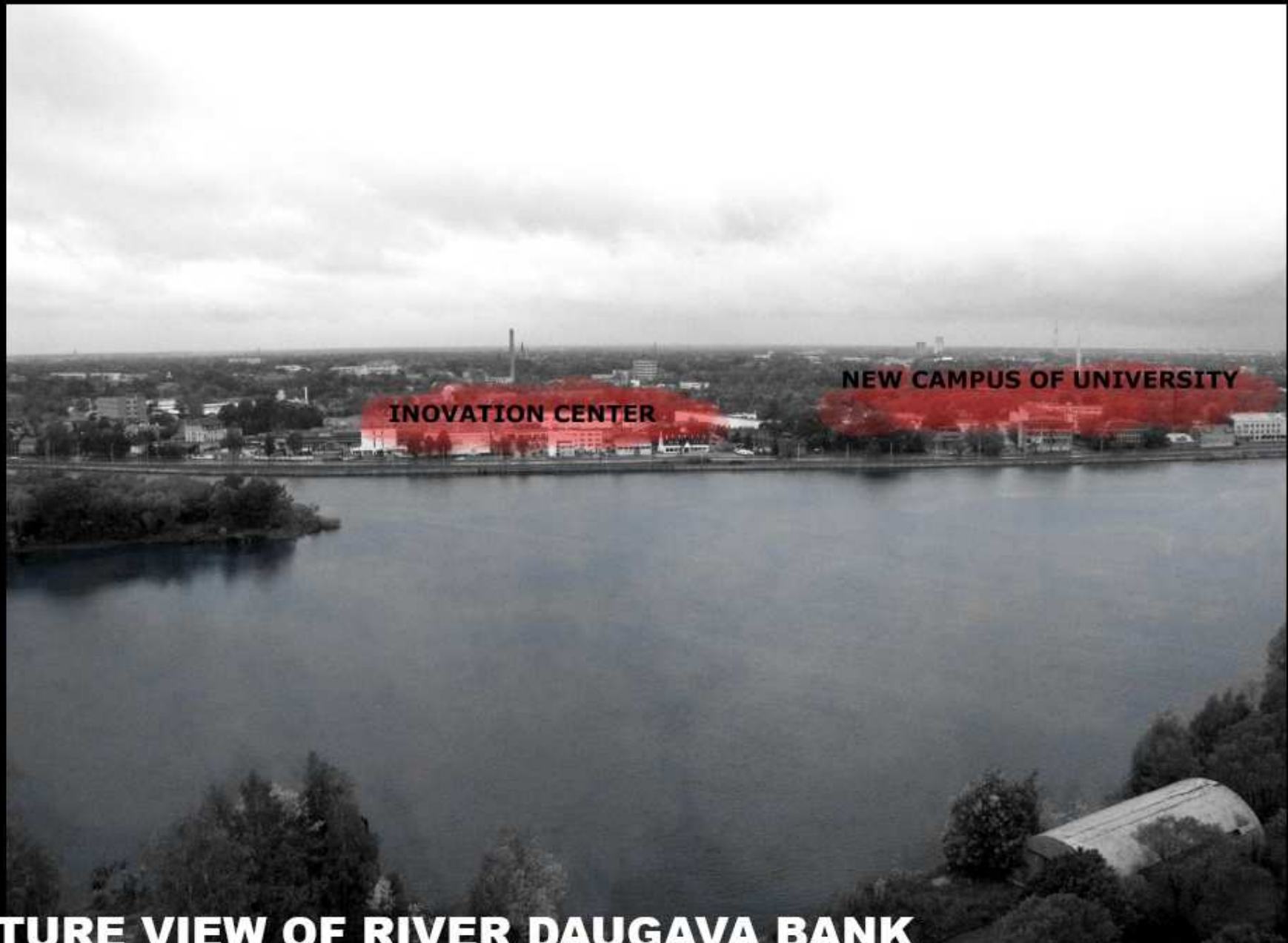
LATVIAN MEN AND WOMEN... NATIONAL IDENTITY
STUDENT + TRADITIONS

DEVELOPMENT OF NEW UNIVERSITY CAMPUS



SITE PLAN

DEVELOPMENT OF NEW UNIVERSITY CAMPUS



FUTURE VIEW OF RIVER DAUGAVA BANK

DEVELOPMENT OF NEW UNIVERSITY CAMPUS



EXISTING SITE - FAMILY GARDEN ASSOCIATION

STUDENT + NATURE

DEVELOPMENT OF NEW UNIVERSITY CAMPUS



EXISTING SITE - KILEVEIN GRAVE

STUDENT + WATER

DEVELOPMENT OF NEW UNIVERSITY CAMPUS



LEFT BANK VISION

DEVELOPMENT OF NEW UNIVERSITY CAMPUS



FUTURE VISION...

STUDENT + LIBRARY

DEVELOPMENT OF NEW UNIVERSITY CAMPUS



FUTURE VISION... CONCERT HALL

STUDENT + CULTURE

DEVELOPMENT OF NEW UNIVERSITY CAMPUS

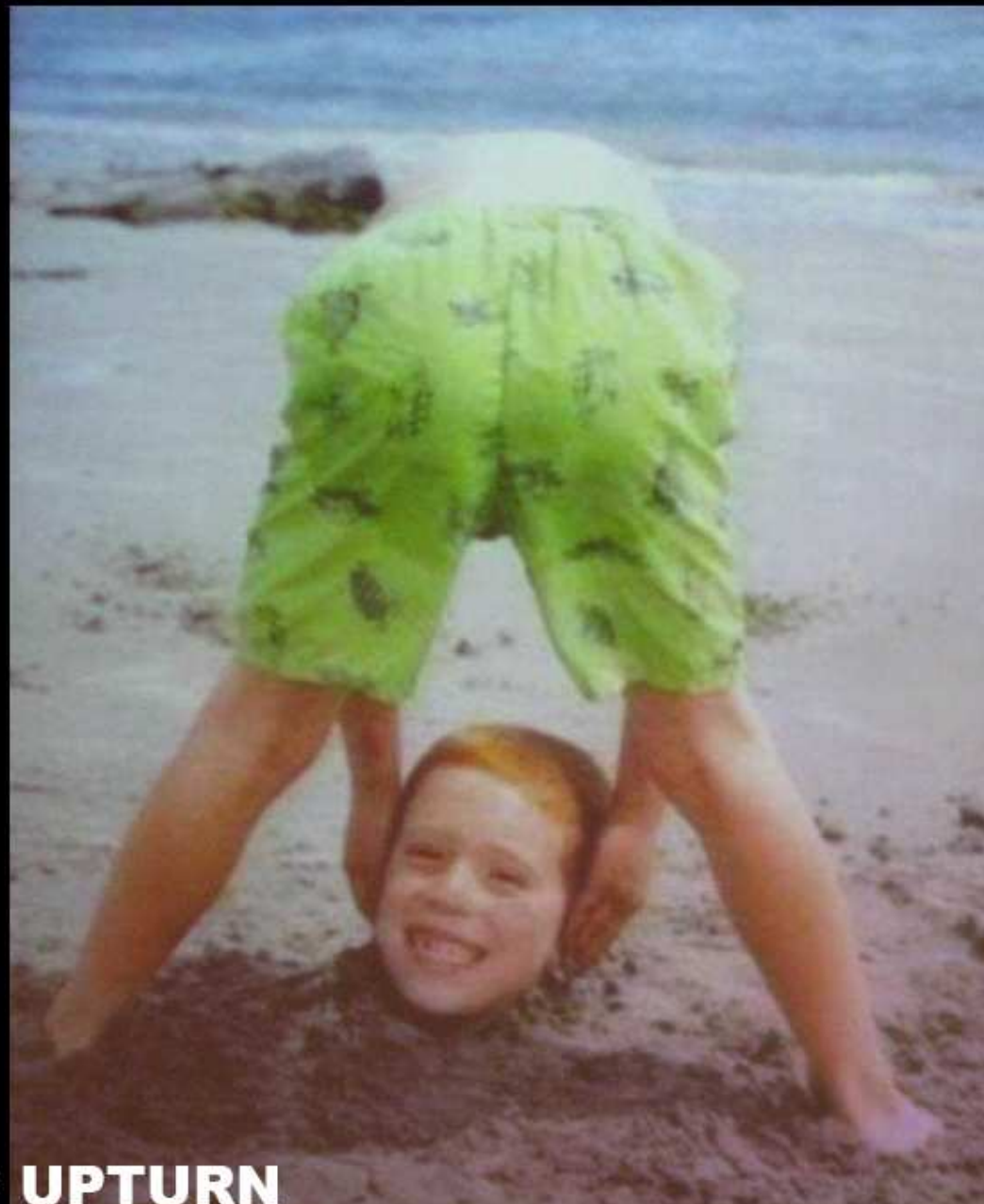


DEVELOPMENT OF NEW UNIVERSITY CAMPUS



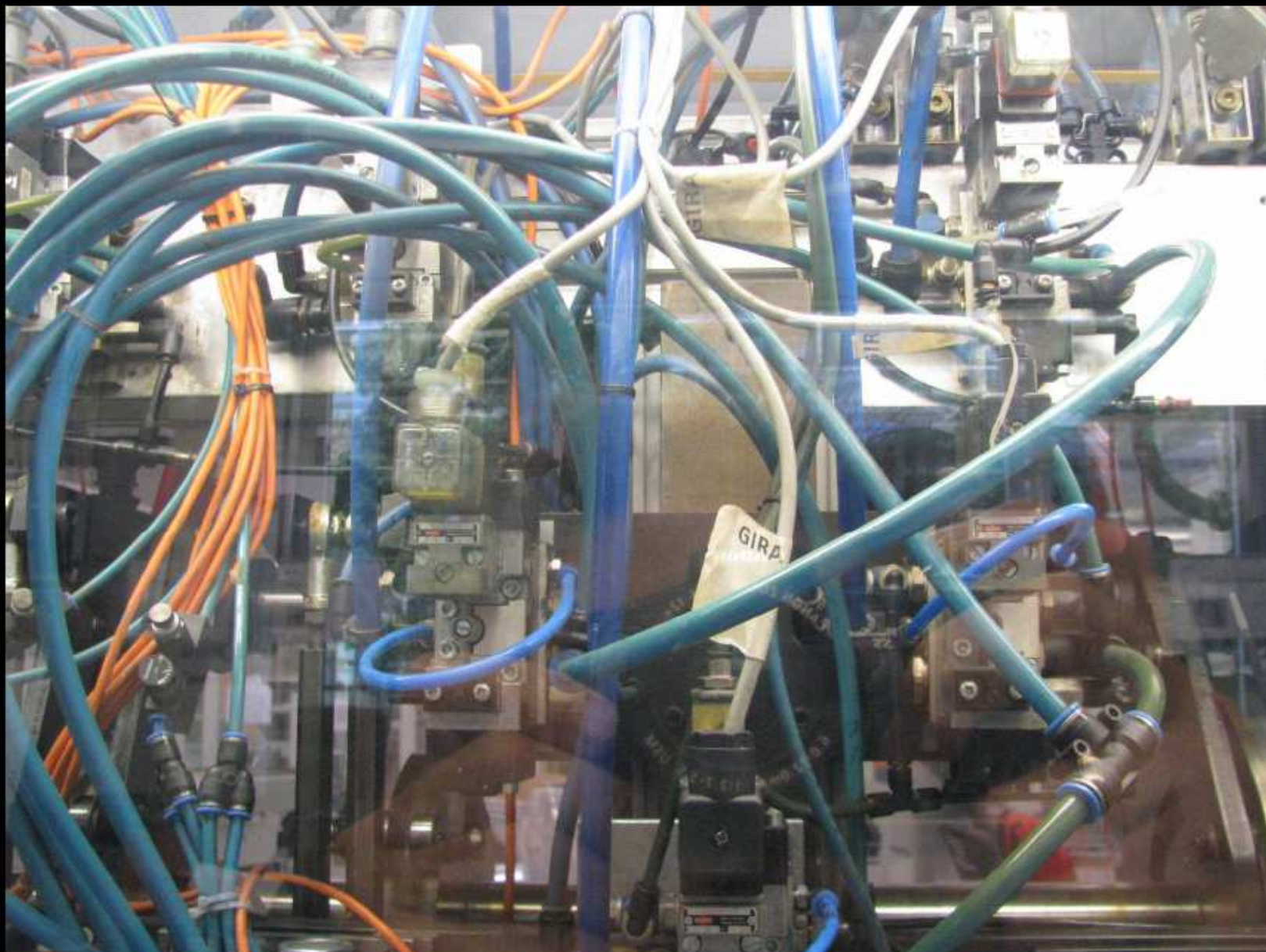
EXISTING SITUATION OF HIGHER EDUCATION IN RIGA CITY

DEVELOPMENT OF NEW UNIVERSITY CAMPUS



...IN NEED OF UPTURN

DEVELOPMENT OF NEW UNIVERSITY CAMPUS



FORMED UNITARY COMPACT SCHEME

DEVELOPMENT OF NEW UNIVERSITY CAMPUS



TARGET: WORLDWIDE COLLABORATION AND FELLOWSHIP

DEVELOPMENT OF NEW UNIVERSITY CAMPUS



IMPORT ◀ STUDENT ▶ EXPORT
STUDENT + EXPERIENCE

DEVELOPMENT OF NEW UNIVERSITY CAMPUS



FUTURE VISION

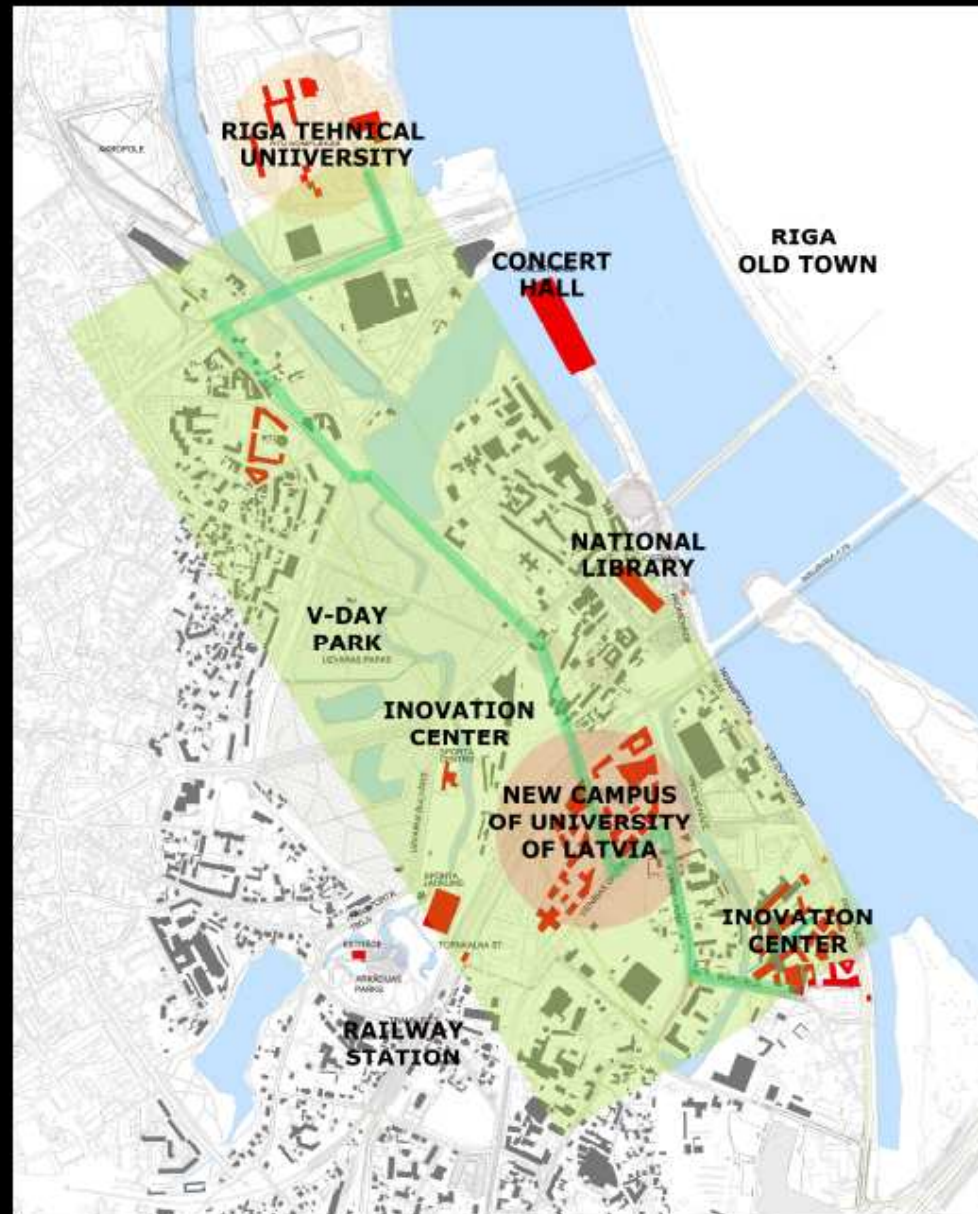
DEVELOPMENT OF NEW UNIVERSITY CAMPUS



MEANS OF LOCOMOTION

STUDENT + BICYCLE

DEVELOPMENT OF NEW UNIVERSITY CAMPUS



INTEGRATION ...ACADEMIC STUDIES+SCIENCES+PRACTIC

DEVELOPMENT OF NEW UNIVERSITY CAMPUS



2009 STUDENT – SHE IS RICH
STUDENT + MONEY

DEVELOPMENT OF NEW UNIVERSITY CAMPUS



2009 STUDENT - HE IS POOR

STUDENT - MONEY

DEVELOPMENT OF NEW UNIVERSITY CAMPUS



LAUSANNE UNIVERSITY = PARTNER OF LATVIA UNIVERSIT

DEVELOPMENT OF NEW UNIVERSITY CAMPUS



CAMPUS PLAZA ALIVE DAY`n`NIGHT

DEVELOPMENT OF NEW UNIVERSITY CAMPUS



NON-STOP FULL-LIFE TOWN

DEVELOPMENT OF NEW UNIVERSITY CAMPUS



INNOVATION CENTER

DEVELOPMENT OF NEW UNIVERSITY CAMPUS



SOCIAL ACTIVITY

STUDENT + HISTORICAL TRACES

Academic Centres in Torņakalns

Phases, years	Academic centres	Floor space m ²	Change of functions in existing buildings
1. X+3	Science and medicine	20 900	Rīga: Raiņa bulv.19, Raiņa bulv.29, Baznīcas iela 5, Alberta iela 10, Šķūņu iela 4, Salaspils, Miera iela 3
2. X+5	Humanities and computing	30 700	Rīga: Raiņa bulv.19, Visvalža iela 4, Brīvības iela 32, Akadēmijas laukums 1 (Latvijas Zinātņu akadēmijas ēka)
3. X+9	Social sciences	18 600	Aspāzijas bulvāris 5, Lomonosova iela 1, Mārstaļļu iela 28,

Academic Centres in Torņakalns

Phases, years	Academic centres	Floor space m ²	Change of functions in existing buildings
4. X+9	Teacher training	9 100	Jūrmalas gatve 74/76
5. X+12	Life sciences and biomedicine	14 900	Kronvalda bulv. 4
6. X+7	Dormitory for 1500- 2000 students, sport facility (Arkādija), canteen, Service centre, book shop		Tāļivalža iela, Burtnieku iela, Buļļu iela

After the Torņakalns campus will be finished the academic functions of LU will be maintained at:

- **Raiņa Blvd. 19 building: law studies; rectors office and central administration;**
- **Zeļļu Str. 8 minicampus, Physics (Theoretical, Molecular Beam) and Math ;**
- **O.Vācieša Str 4 LU EKMI, Nursing programme;**
- **Alberta 10 building together with Alberta 13 (RGSL) and Strelnieku 4 (RGSL and REA) builds up university consortium – Centre of Excellence for International Business, Law and Policy studies**

LU will develop three R&D Centres:

- 1) MHD research Centre – Amper platform in conjunction with the National Cyclotron Centre in Salaspils, transforming the building of the Institute of Biology (Miera Str.3) into support/service infrastructure;**
- 2) Centre of Material Sciences – CFI building in Kengaraga Str., accommodating also the remnants of PMI;**
- 3) Centre of Biotechnology and Pharmaceutical Research in Kleisti**

Baldone Observatory has to be maintained in consortium with Venspils Radioastronomy Centre.

PPP should be involved in the development of the infrastructure needed for the support of LU academic activities

**Botanical Garden and together with the LU Museum Science and Technology History core of Science Adventure Centre
(Joint National Museum of Natural History at Kronvalda Blvd 4)**

Academic depository – Salaspils, Lielvārdes street?

Dormitories and guest houses for visiting professors (Valdemāra Str. 69, Basteja Blvd. 10 / 12).

Available resources:

EU structural funds for modernization of HEI	(22,7 M LVL)
EU structural funds for modernization of RI	(~28 M LVL)
Other EU and international projects	(~ 10 MLVL)
Income from lending or conversion of LU real estate	(~ 40 M LVL)
LU savings from not investing in old buildings (5 y)	(~ 10 M LVL)
Public private partnership (PPP)	(~ 30 M LVL)
Altogether ~ 140 M LVL	

DEVELOPMENT OF NEW UNIVERSITY CAMPUS



RIGA, 2014.

EUROPEAN CAPITAL OF CULTURE

GRAND OPENING OF NEW CAMPUS OF UNIVERSITY