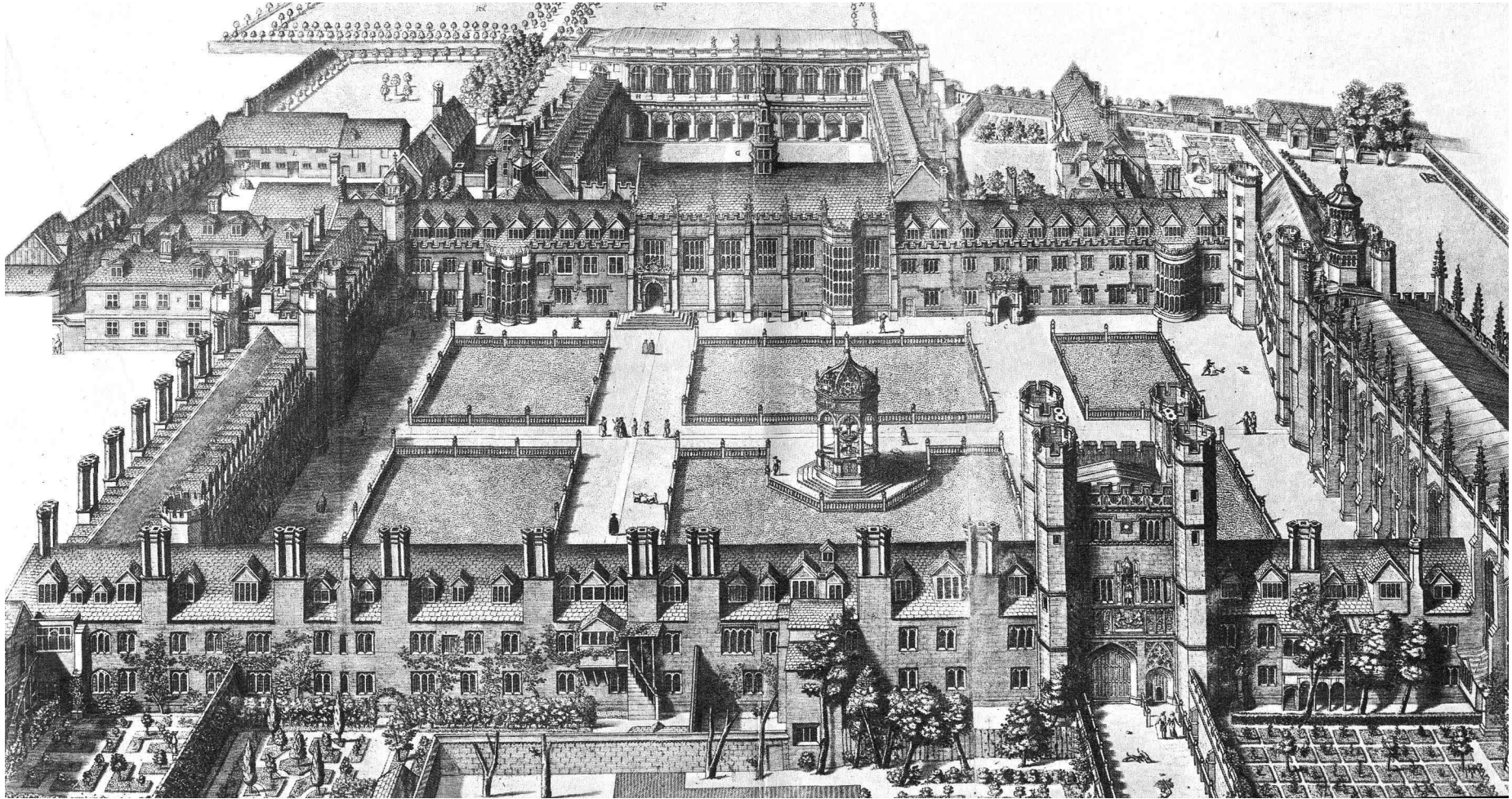


FUSION FACILITIES

Emerging mixed use buildings for teaching and learning
– case study examples from the UK, US and Asia

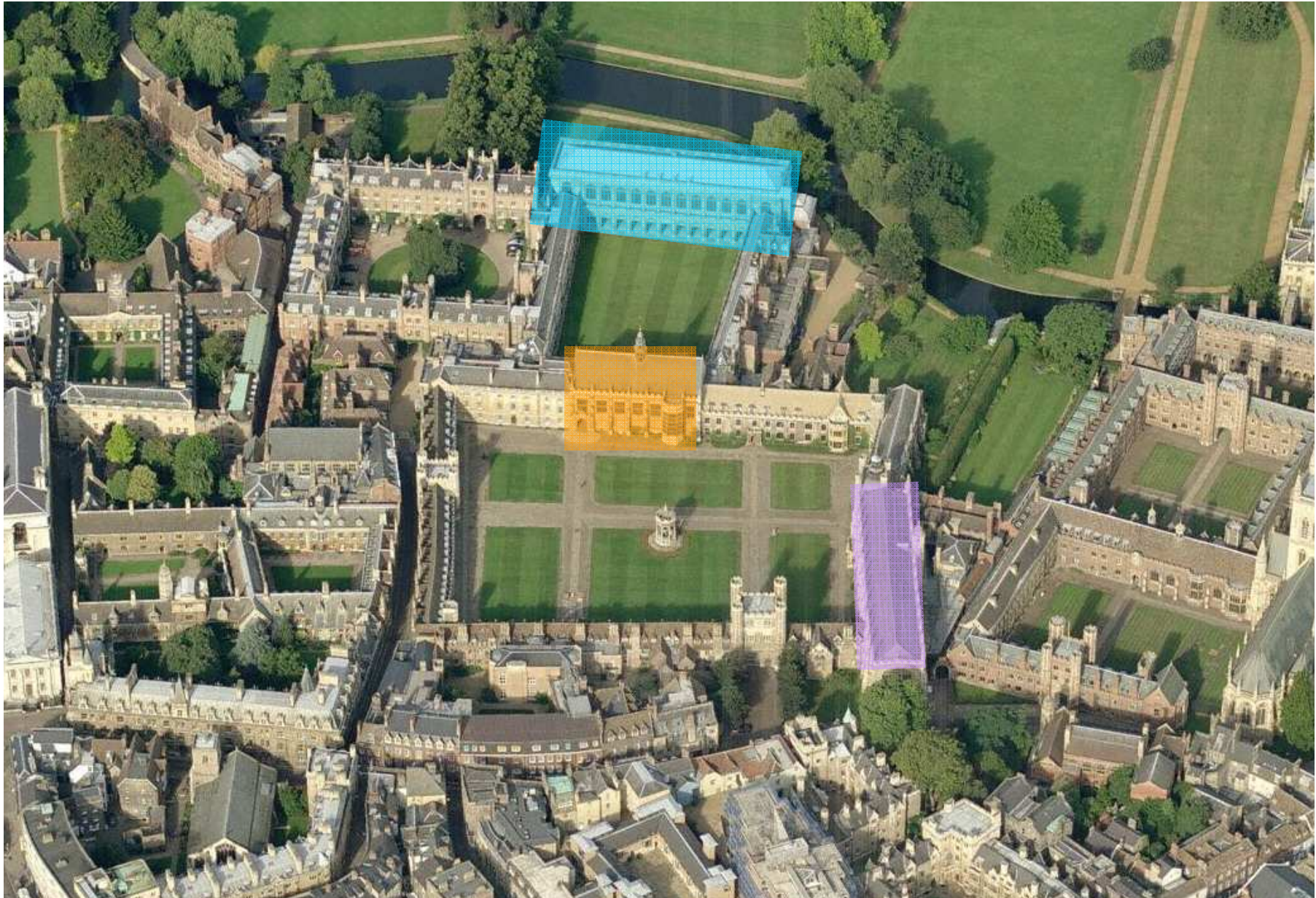




Trinity College Cambridge University



Trinity College Cambridge University

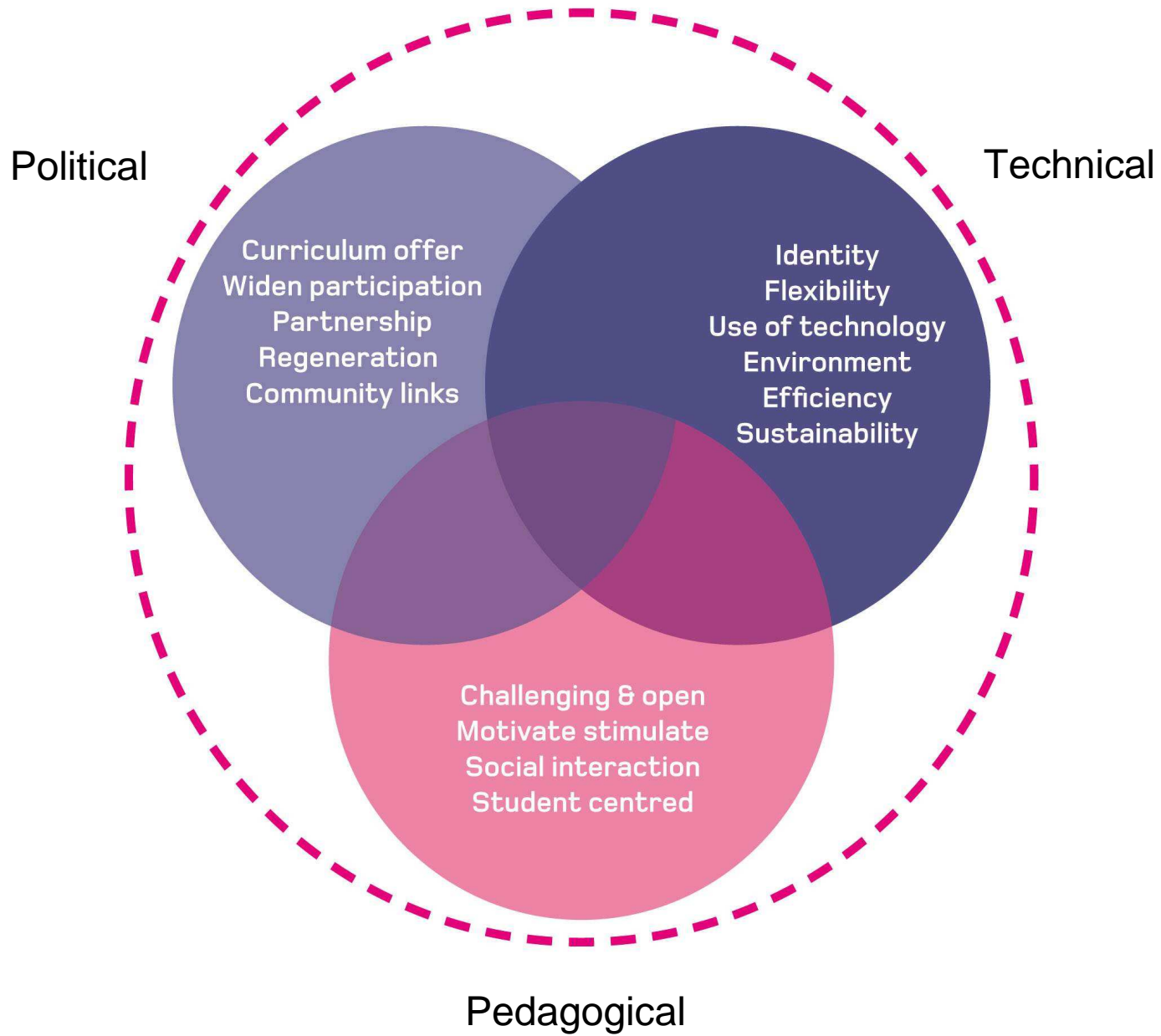


Trinity College Cambridge University

LEARNING LED DELIVERY DRIVEN

LEARNING LED DELIVERY DRIVEN







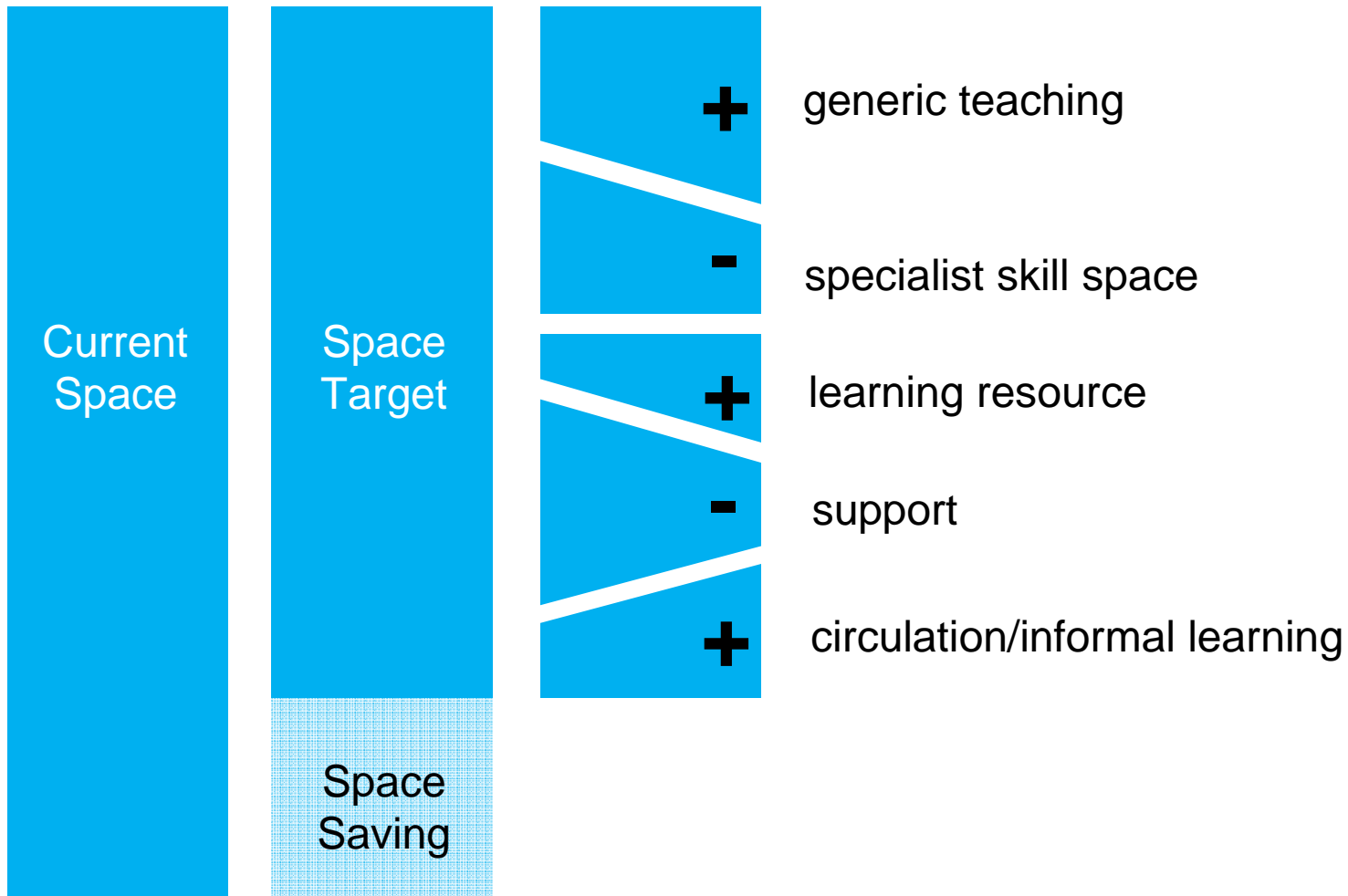
Energy

Space

Control

Access

Challenges



Space Allocation



+



Fusion

==





+

+

+



Fusion

==

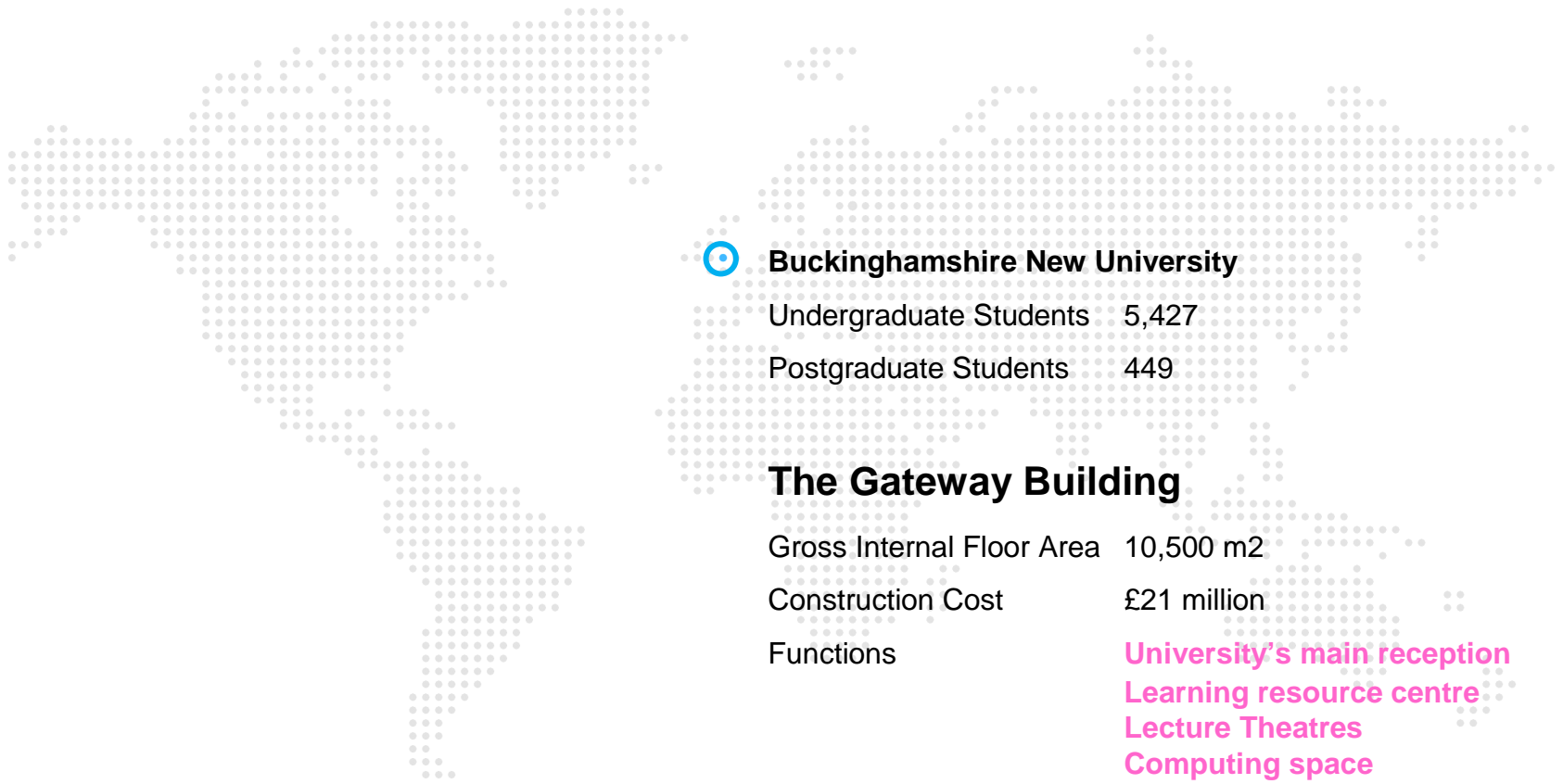


Buckinghamshire New University

The Gateway



Buckinghamshire New University High Wycombe, UK



Buckinghamshire New University

Undergraduate Students 5,427

Postgraduate Students 449

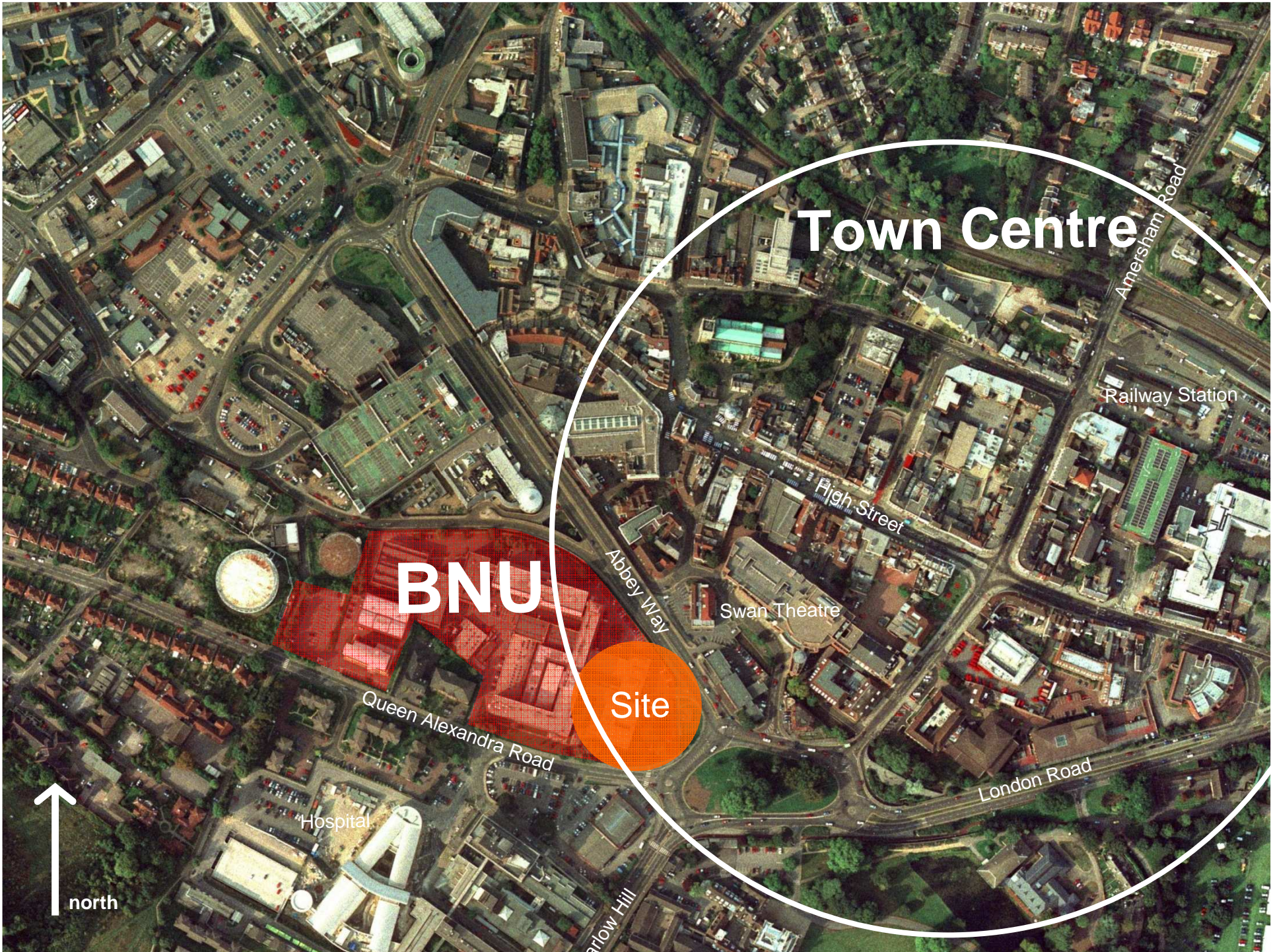
The Gateway Building

Gross Internal Floor Area 10,500 m²

Construction Cost £21 million

Functions

- University's main reception
- Learning resource centre
- Lecture Theatres
- Computing space
- Group study spaces
- Gymnasium
- Sports/Multi-purpose Hall
- Music and multi-media
- Drama and Dance studios
- Cafeteria



Town Centre

BNU

Site

Railway Station

High Street

Swan Theatre

Queen Alexandra Road

Abbey Way

London Road

Amersham Road

Arrow Hill

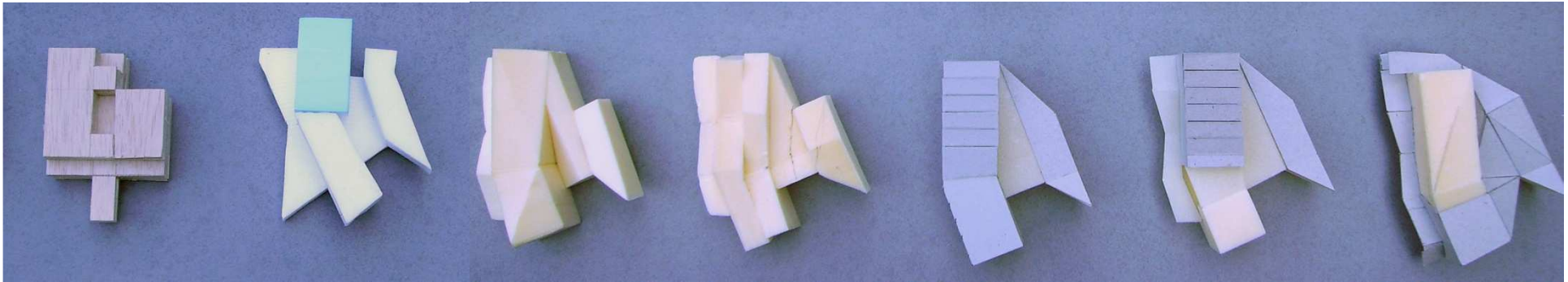
Hospital

north

“ To create a distinctive sculpted architectural form, evolving from the opportunities of its unique context and an exceptional brief, which clearly contrasts with the existing campus architecture to create a stimulating and memorable environment.”

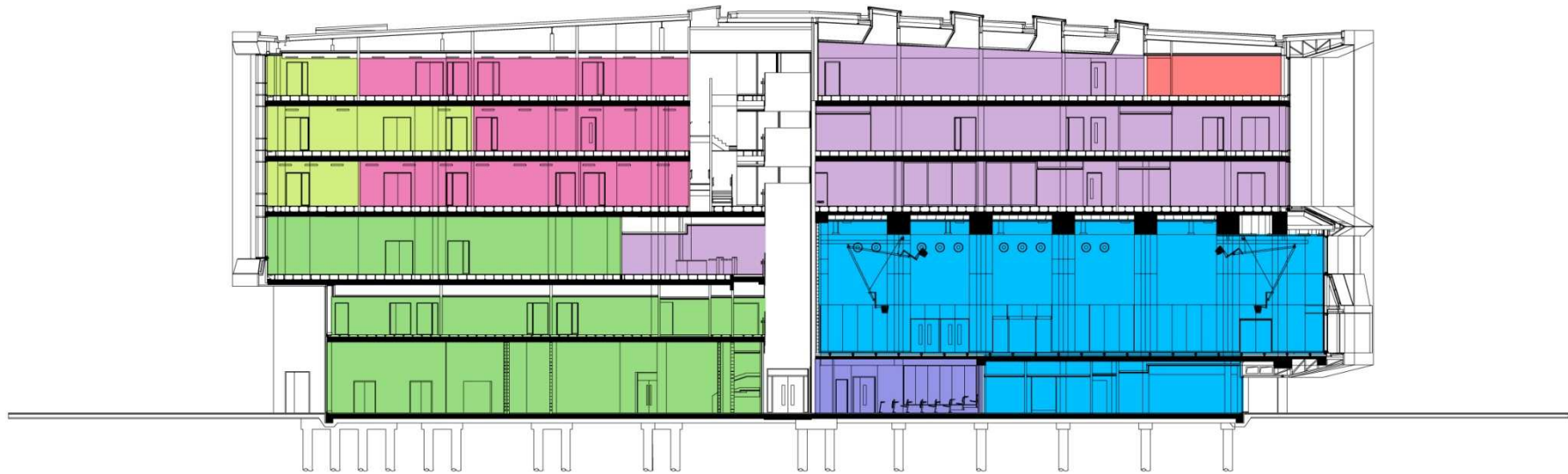





Buckinghamshire New University Architectural Concept



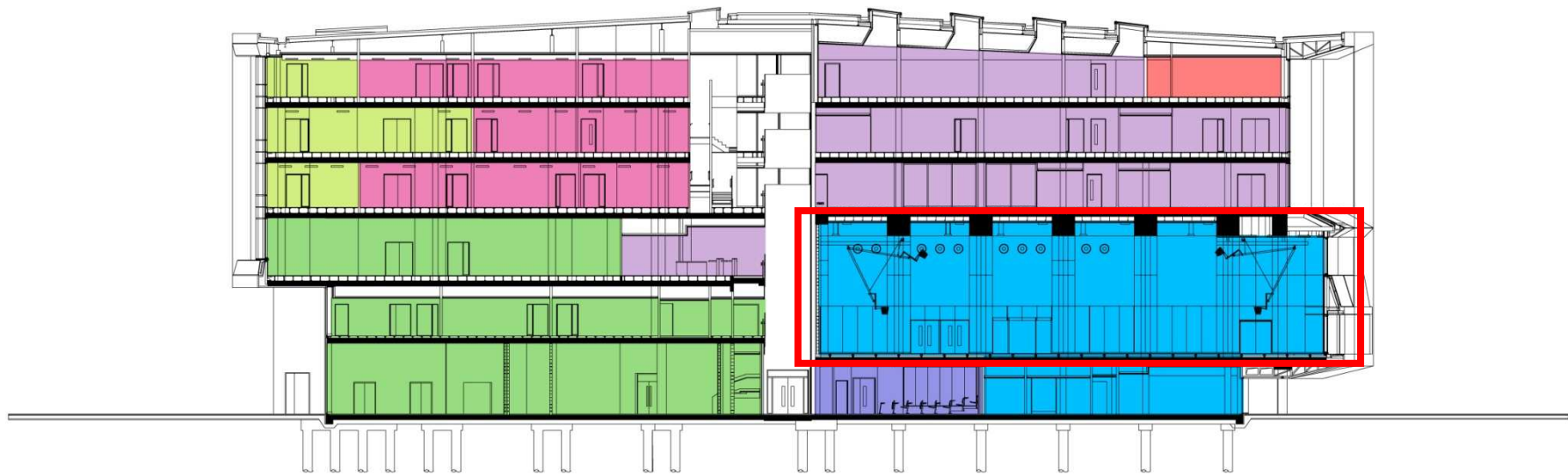
prominent . contextual . responsive . tactile . exciting . transparent . memorable . expressive . legible . sculptural . bold . focus . stimulating

Buckinghamshire New University Design evolution



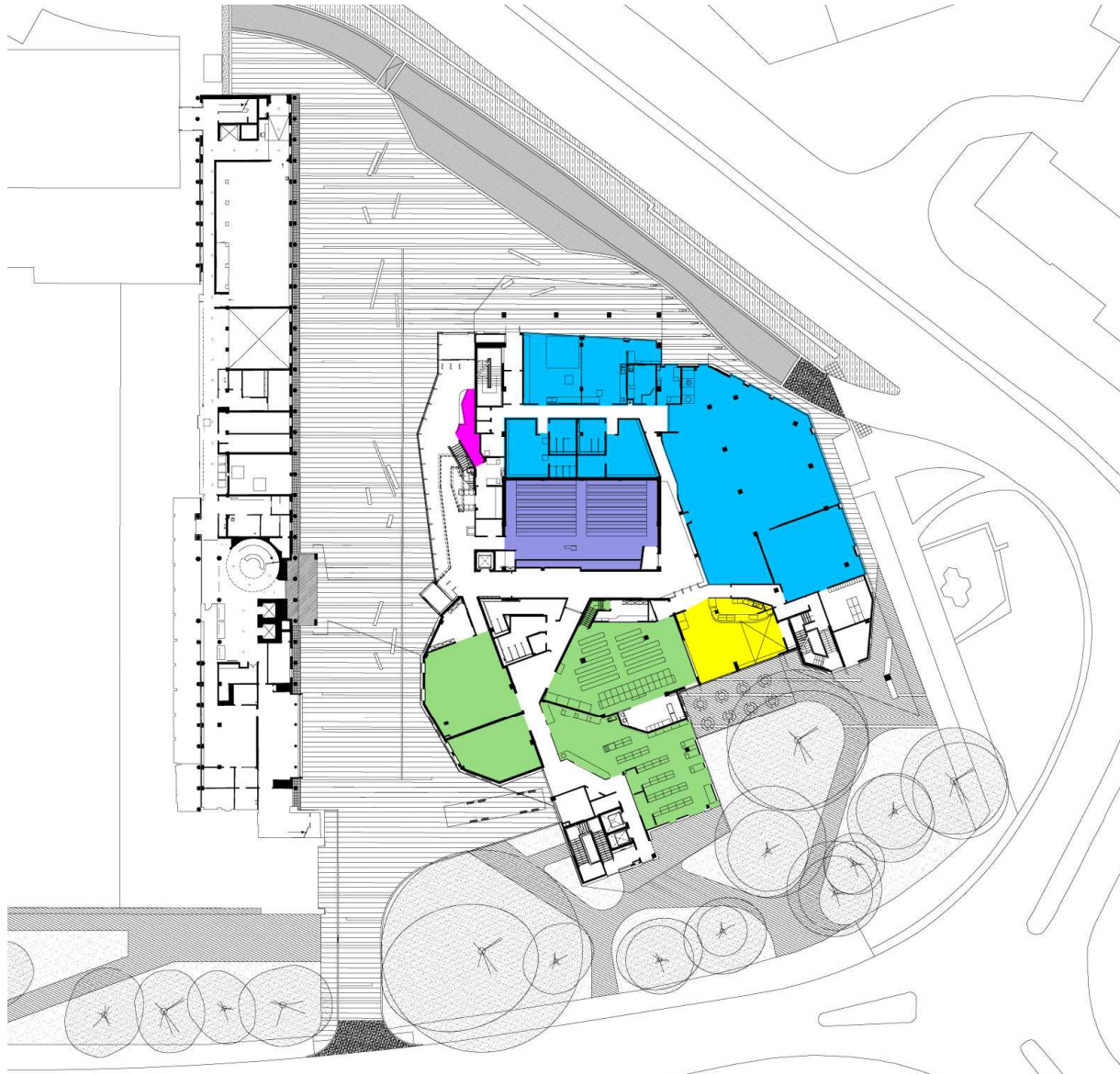
- | | | | |
|---|--------------------------|---|-------------------------------|
|  | Conference Room |  | Fitness Centre/
Event Hall |
|  | IT Rooms |  | Lecture Theatre |
|  | Learning Resource Centre |  | Media & Drama |
| | |  | Offices |

Buckinghamshire New University Section




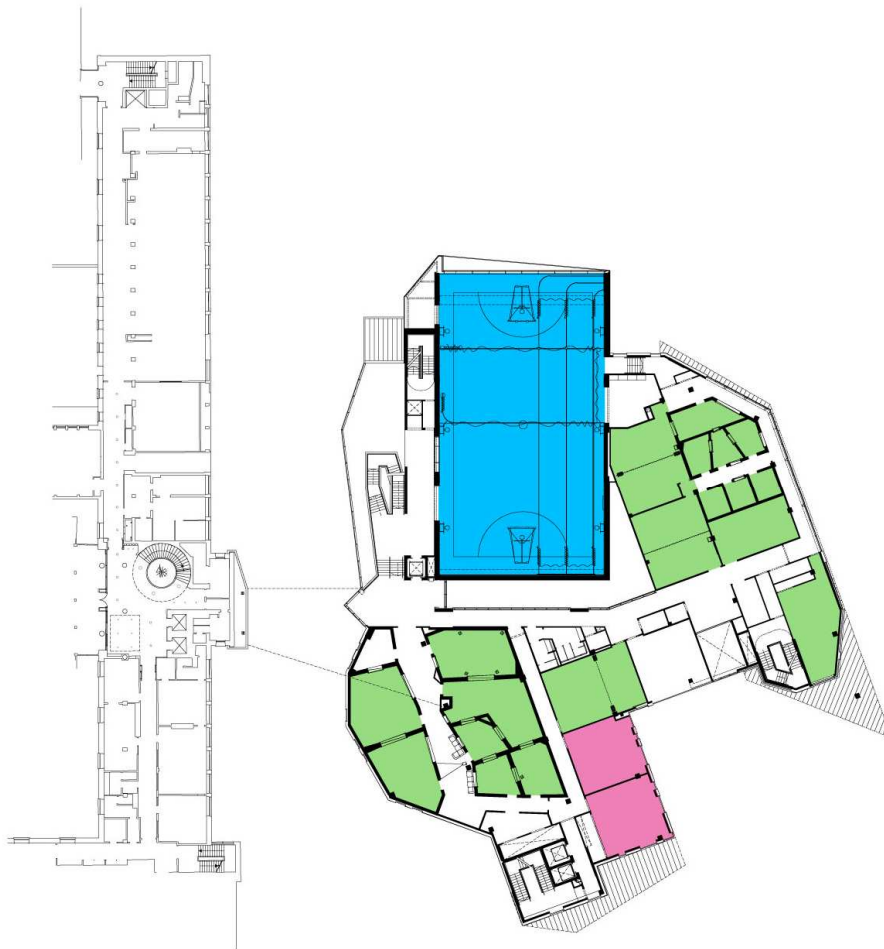
- Fitness Centre/ Event Hall
- Conference Room
- Lecture Theatre
- IT Rooms
- Media & Drama
- Learning Resource Centre
- Offices

Buckinghamshire New University Section



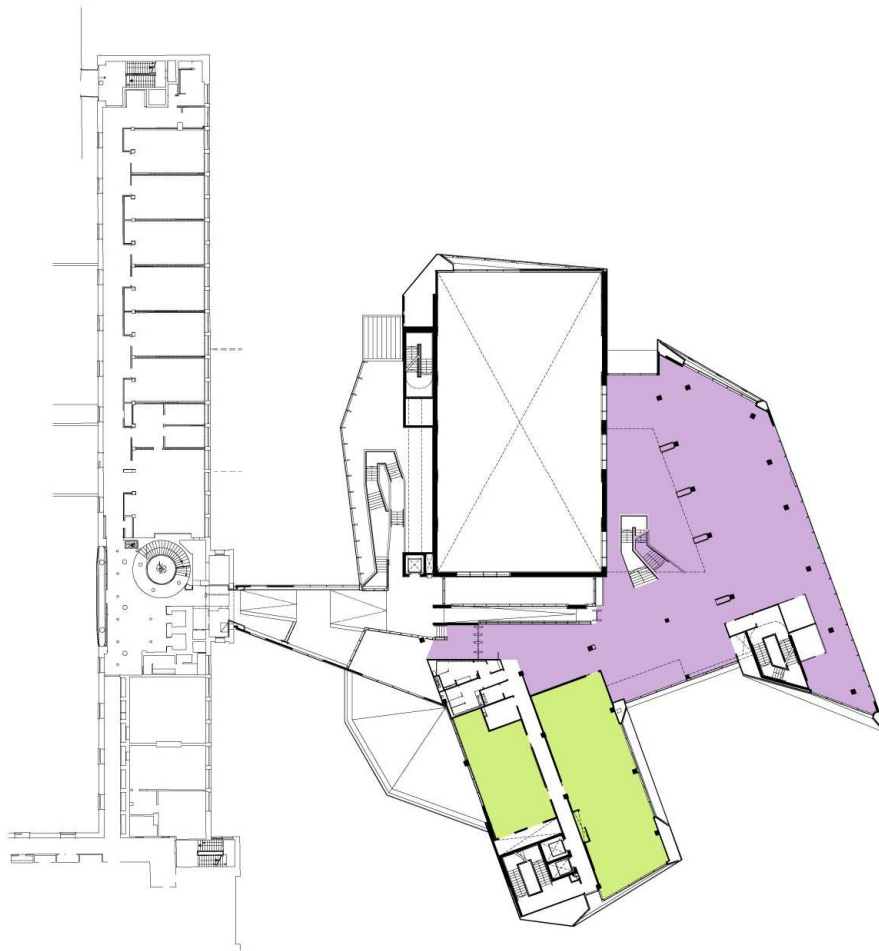
GROUND FLOOR

-  Fitness Centre
-  Lecture Theatre
-  Cafe
-  Media & Drama
-  Reception



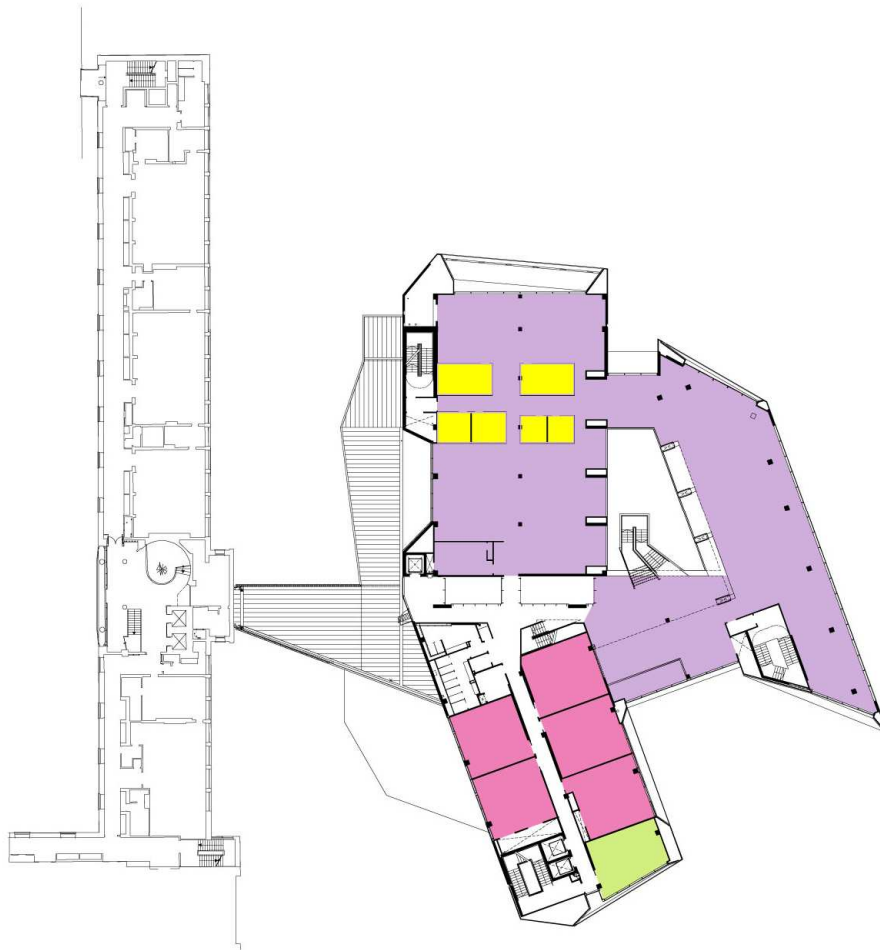
FIRST FLOOR

- Events Hall
- Audio & Music
- IT Rooms







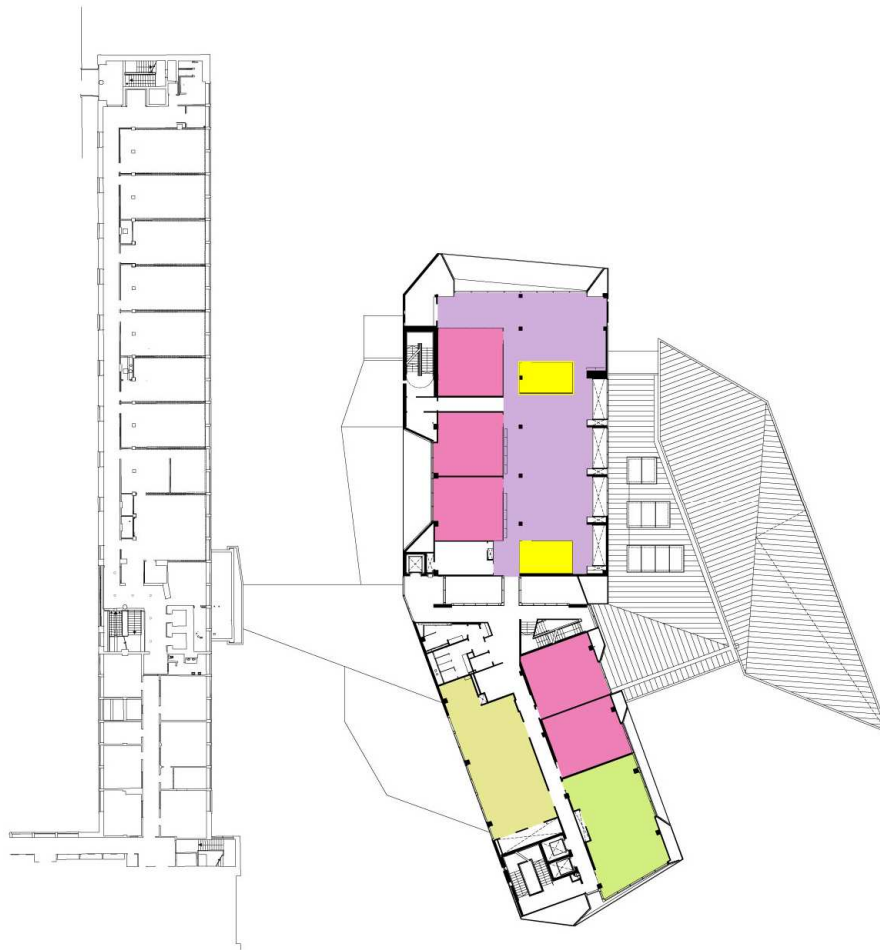
SECOND FLOOR

- Learning Resource Centre
- Offices








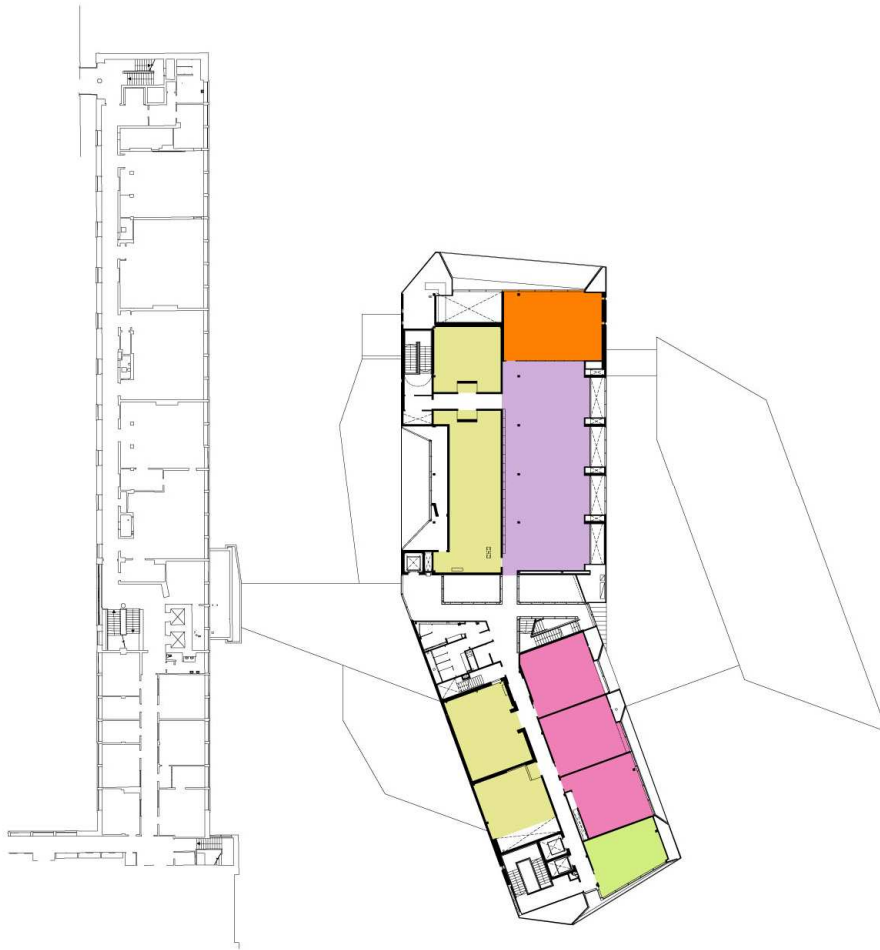
THIRD FLOOR

-  Group Study Rooms
-  IT Rooms
-  Learning Resource Centre
-  Offices



THIRD FLOOR

-  Group Study Rooms
-  IT Rooms
-  Learning Resource Centre
-  Offices
-  Plant Room



FOURTH FLOOR

- Conference Room
- IT Rooms
- Learning Resource Centre
- FDLC
- Plant Rooms



Buckinghamshire New University The Gateway



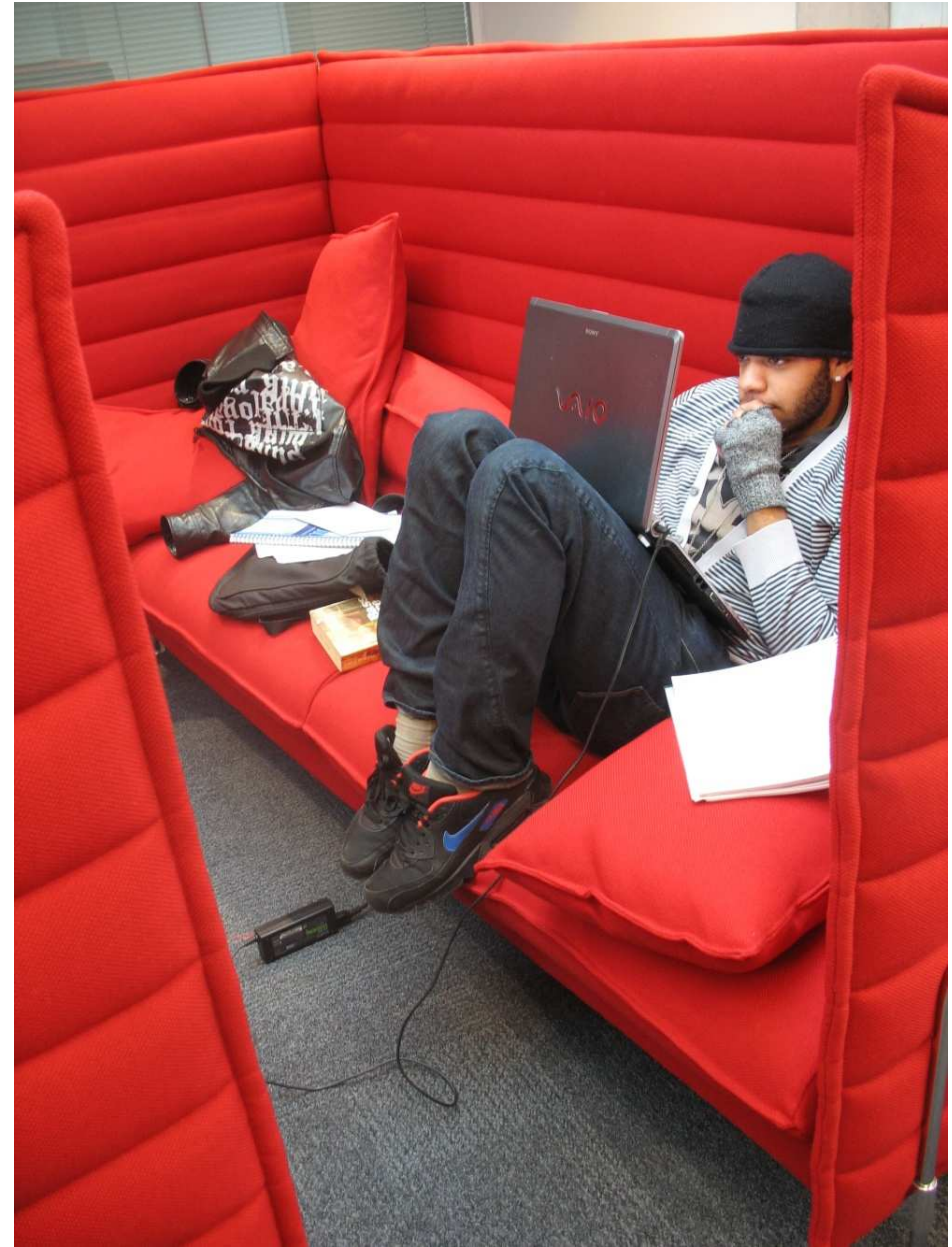
Buckinghamshire New University The Gateway



Buckinghamshire New University The Gateway



Buckinghamshire New University The Gateway



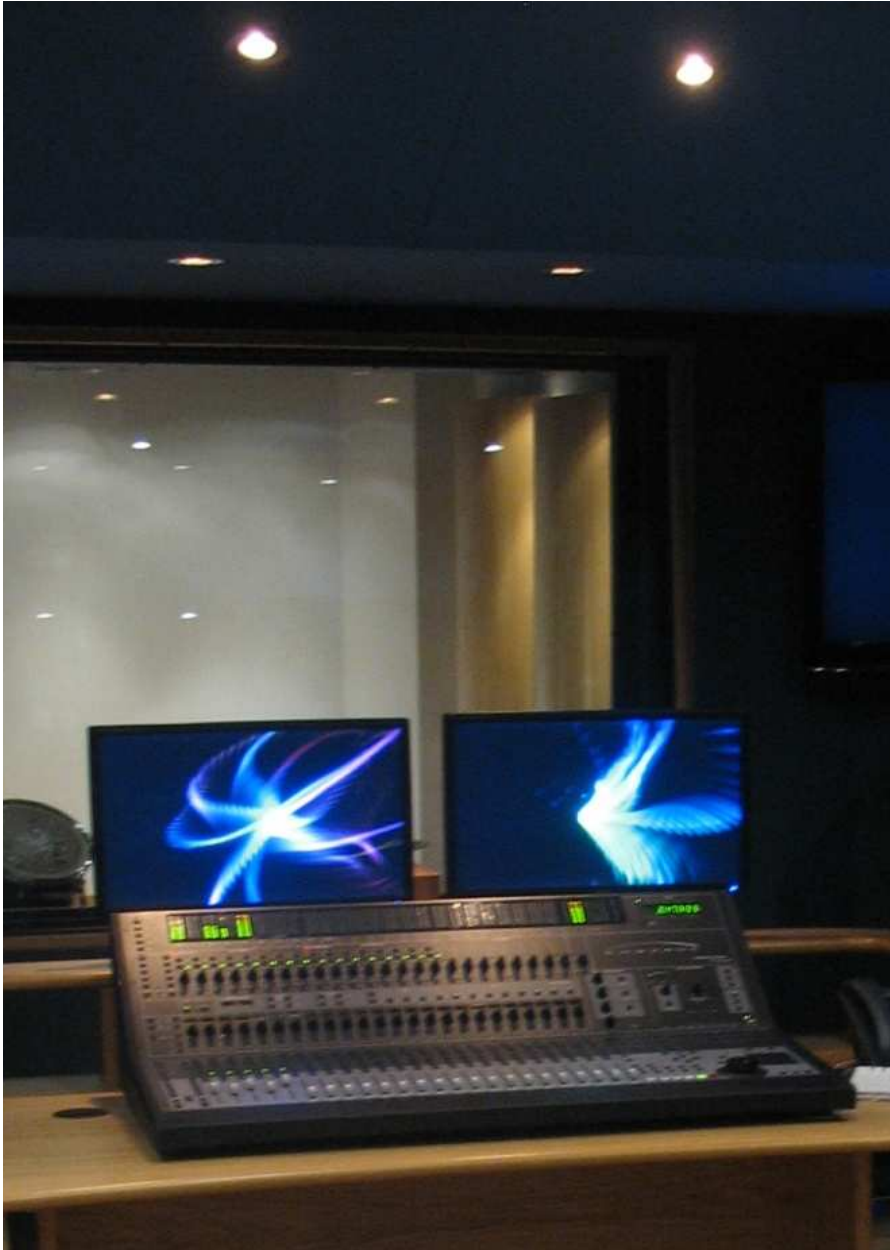
Buckinghamshire New University The Gateway



Buckinghamshire New University The Gateway



Buckinghamshire New University The Gateway



Buckinghamshire New University The Gateway



Buckinghamshire New University The Gateway



Buckinghamshire New University The Gateway

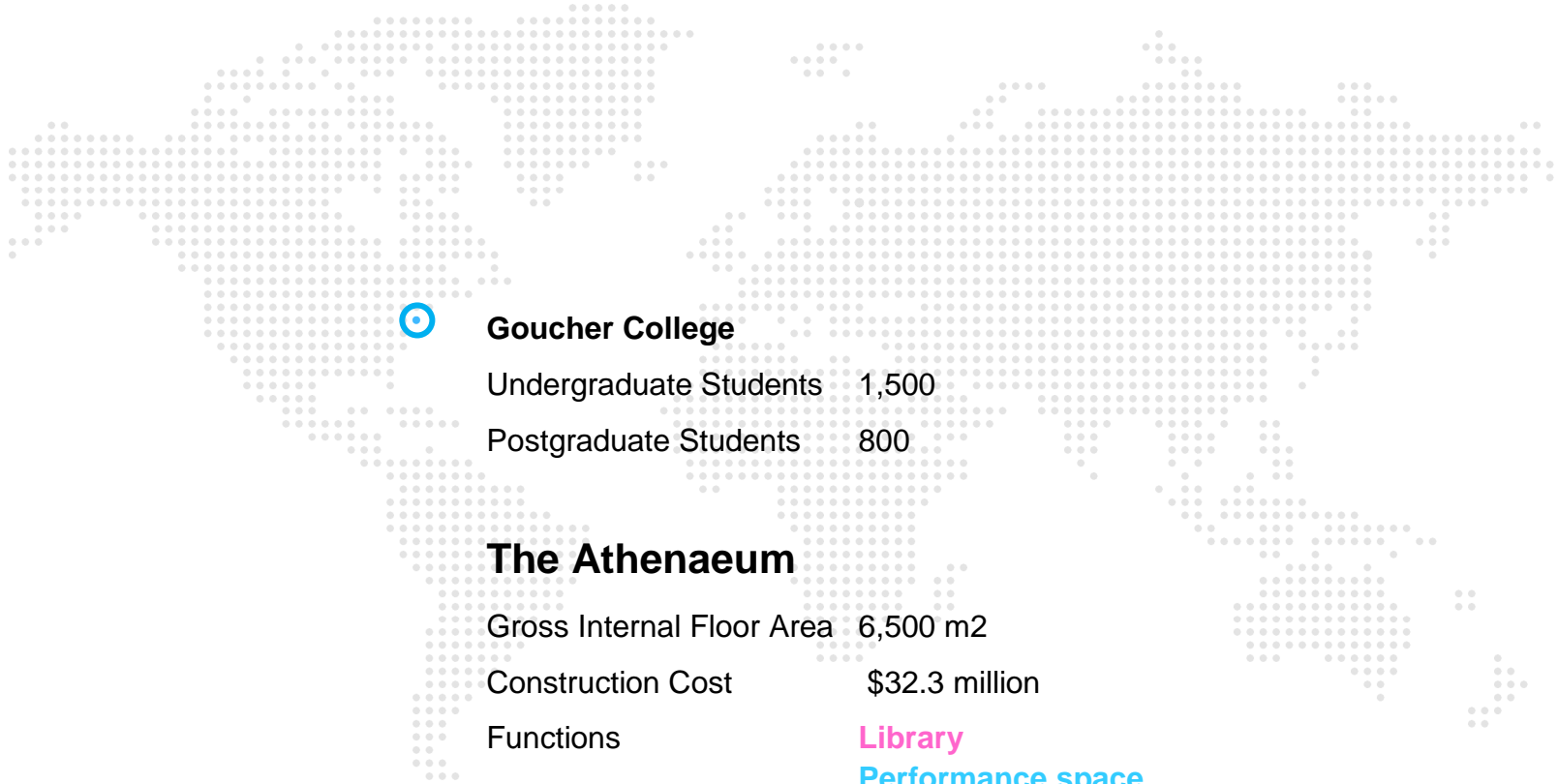


Buckinghamshire New University The Gateway

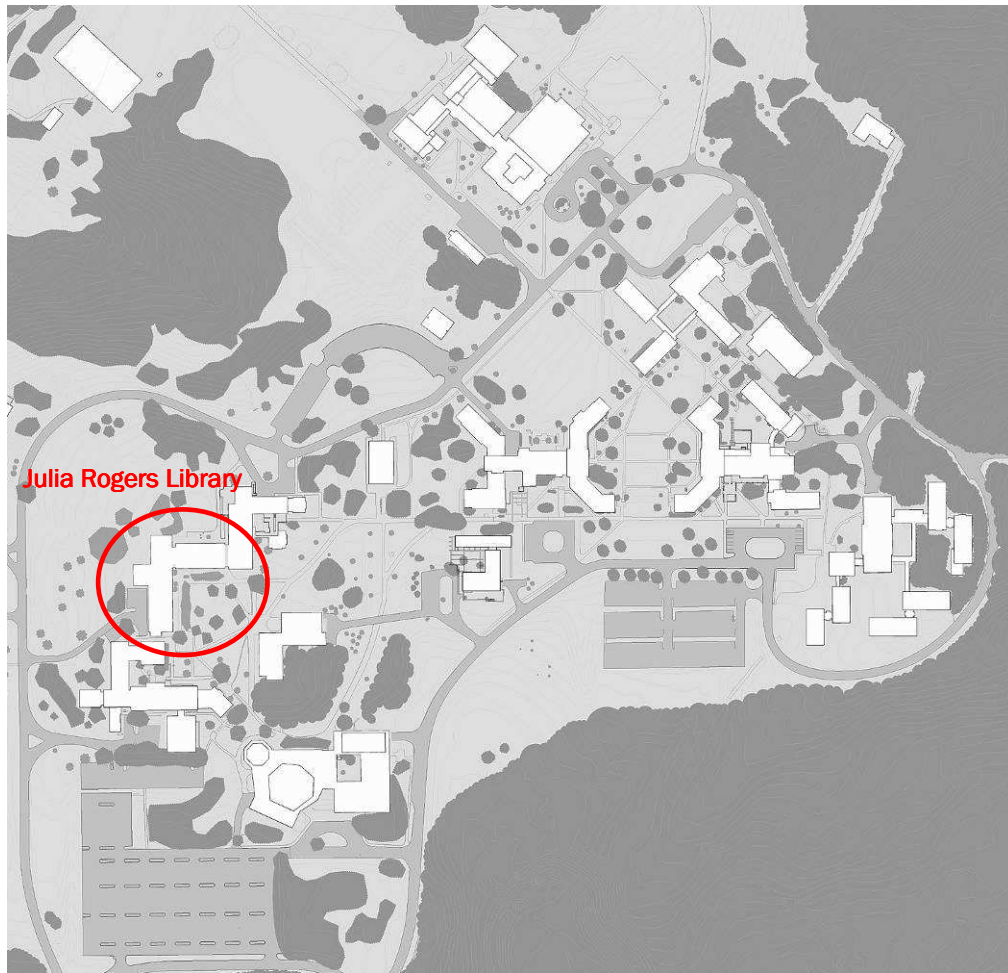
Goucher College
Athenaeum



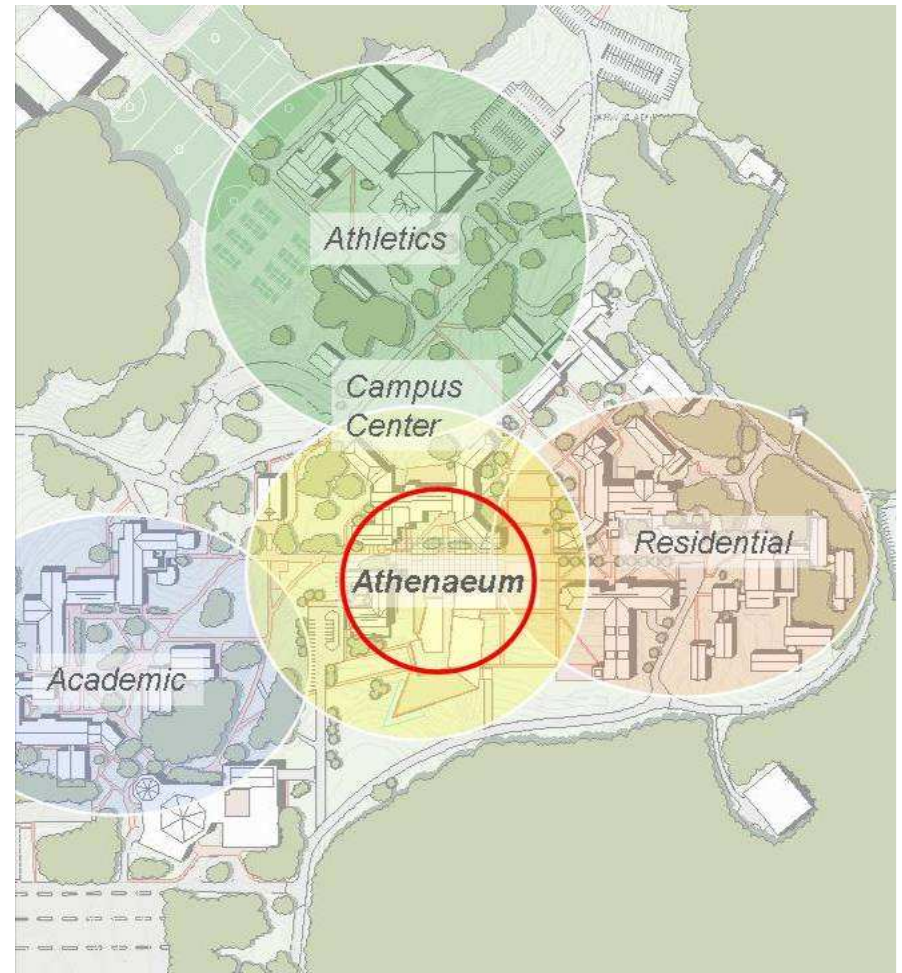
Goucher College Athenaeum



Goucher Campus Before



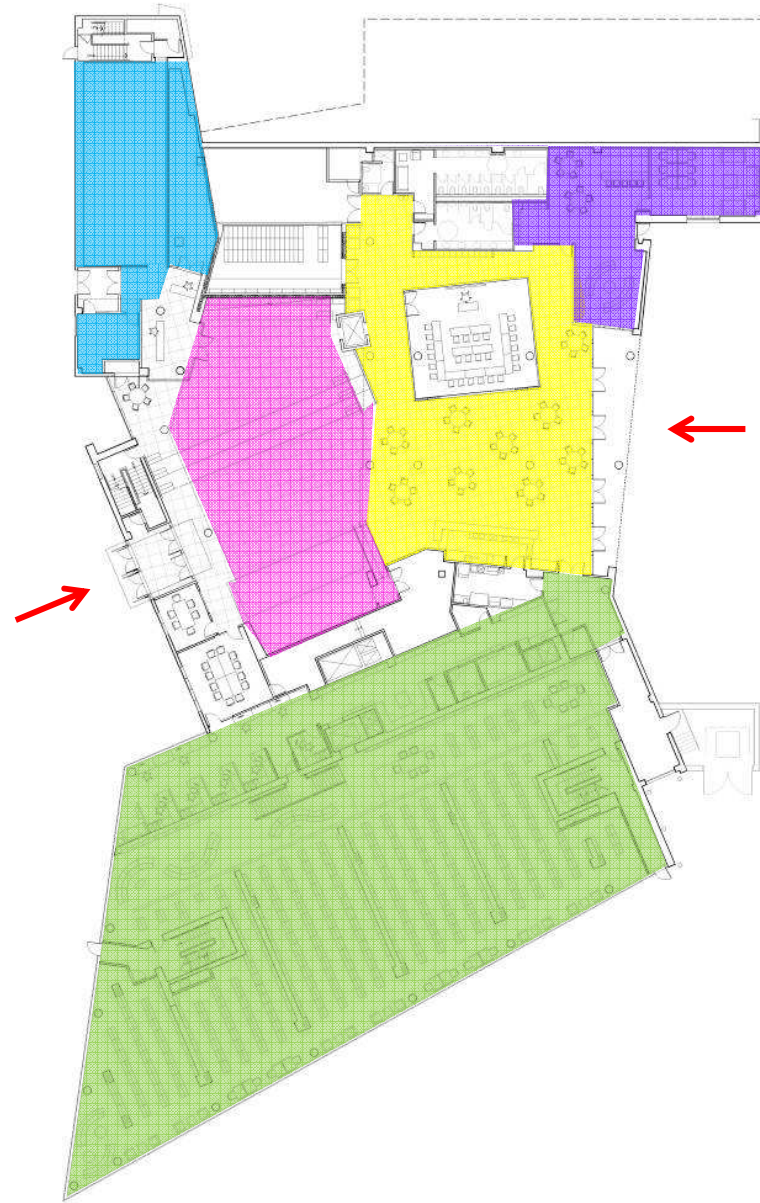
Goucher Campus After



Goucher College Athenaeum

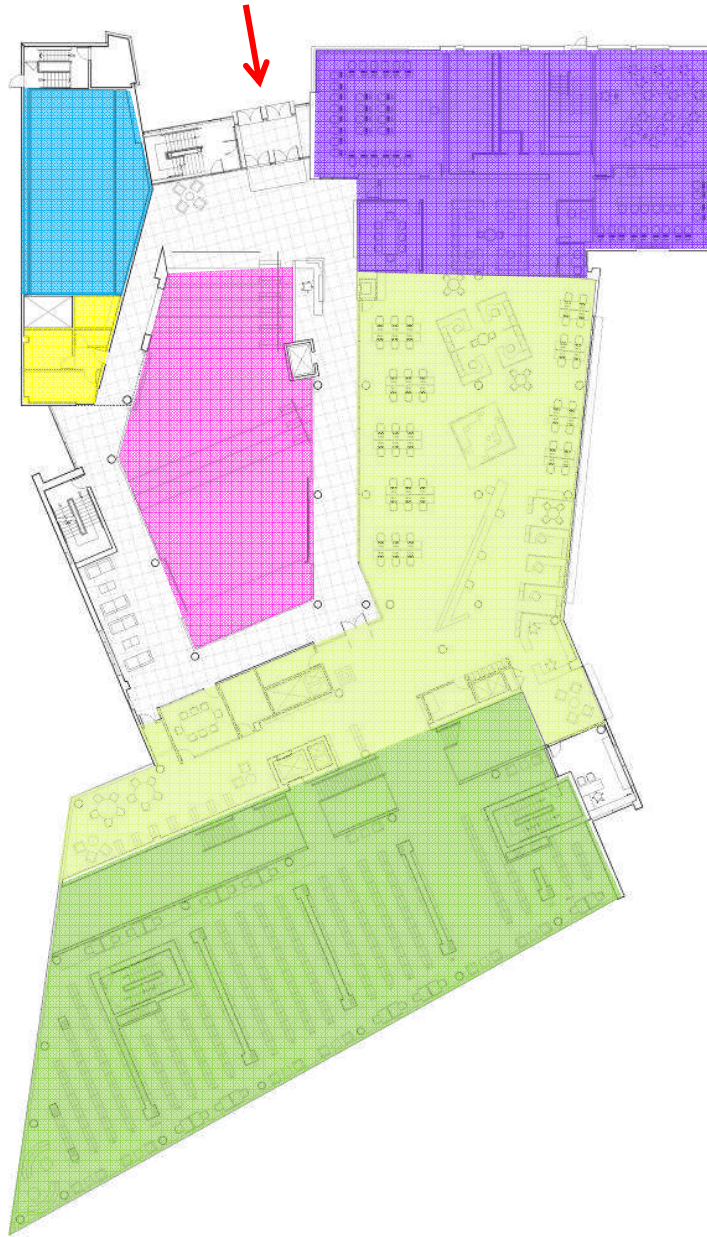


Goucher College Atheneum






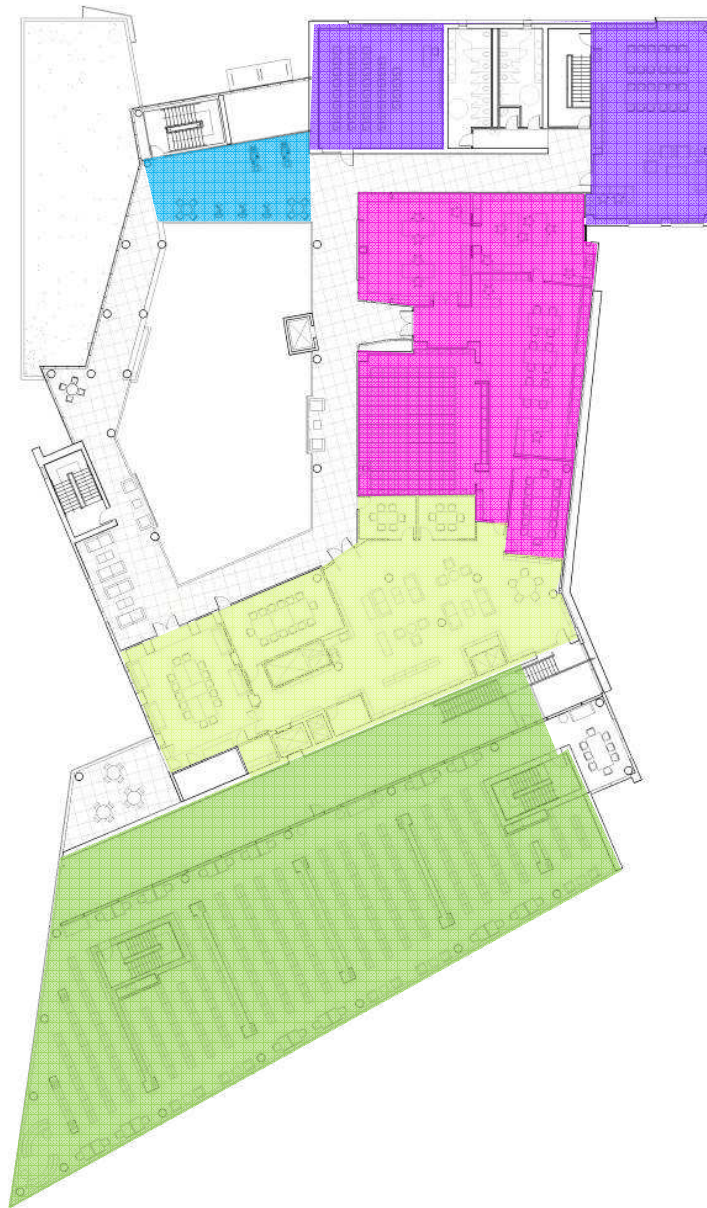
GROUND FLOOR

- Art Gallery
- Commuter Lounge
- Cafe
- Library
- Forum



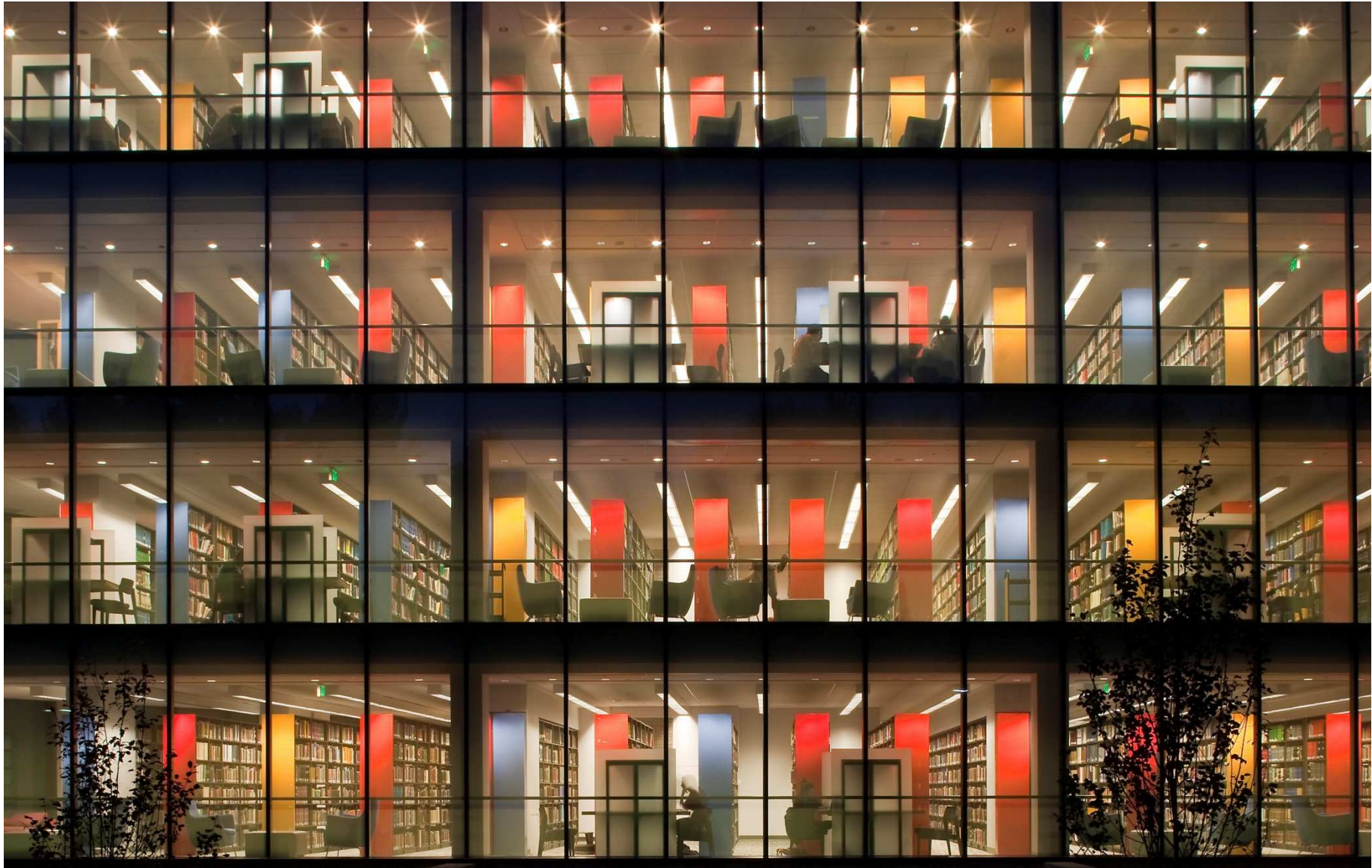
FIRST FLOOR

-  Art Gallery
-  Teaching
-  Information Commons
-  Library
-  Forum
-  Radio Station



SECOND FLOOR

- Cardio Loft
- Teaching
- Information Commons
- Library
- Special Collections



Goucher College Athenaeum



Goucher College Athenaeum



Goucher College Athenaeum



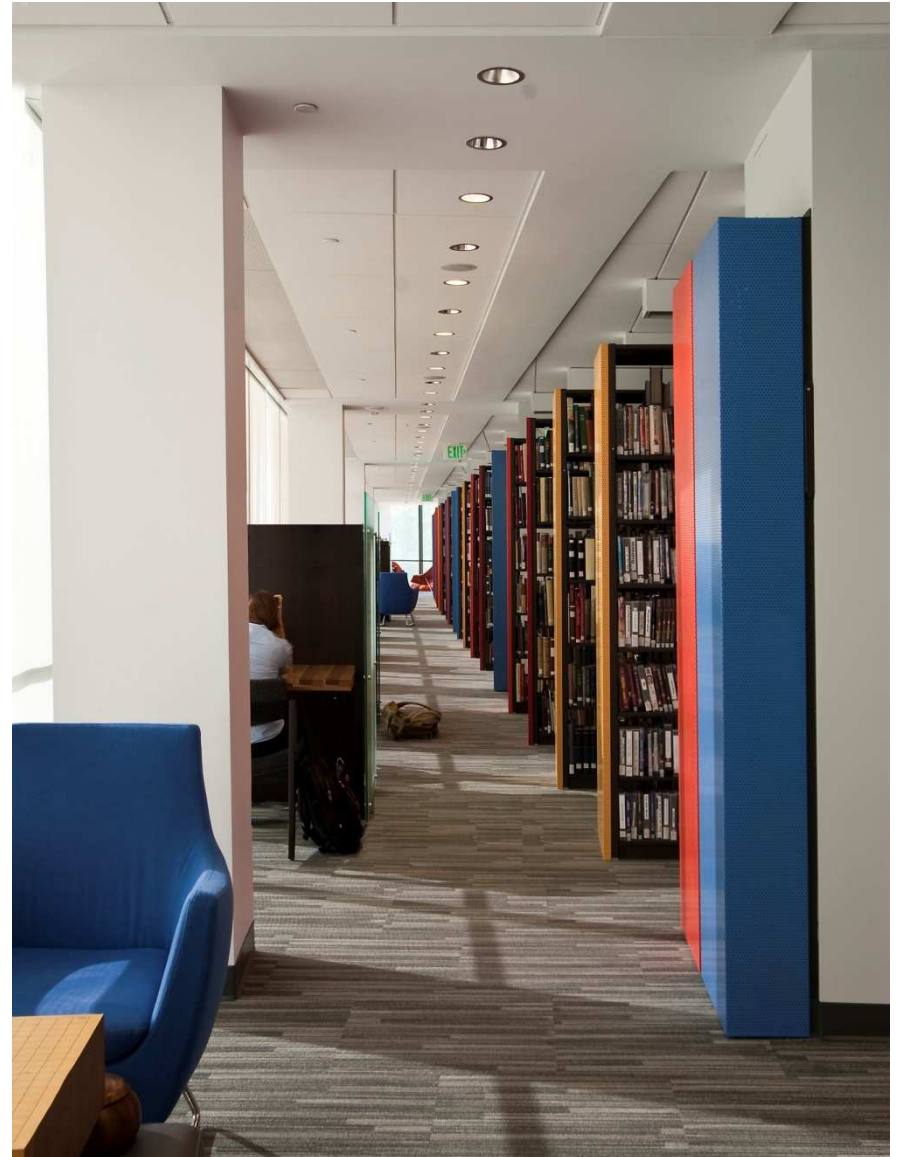
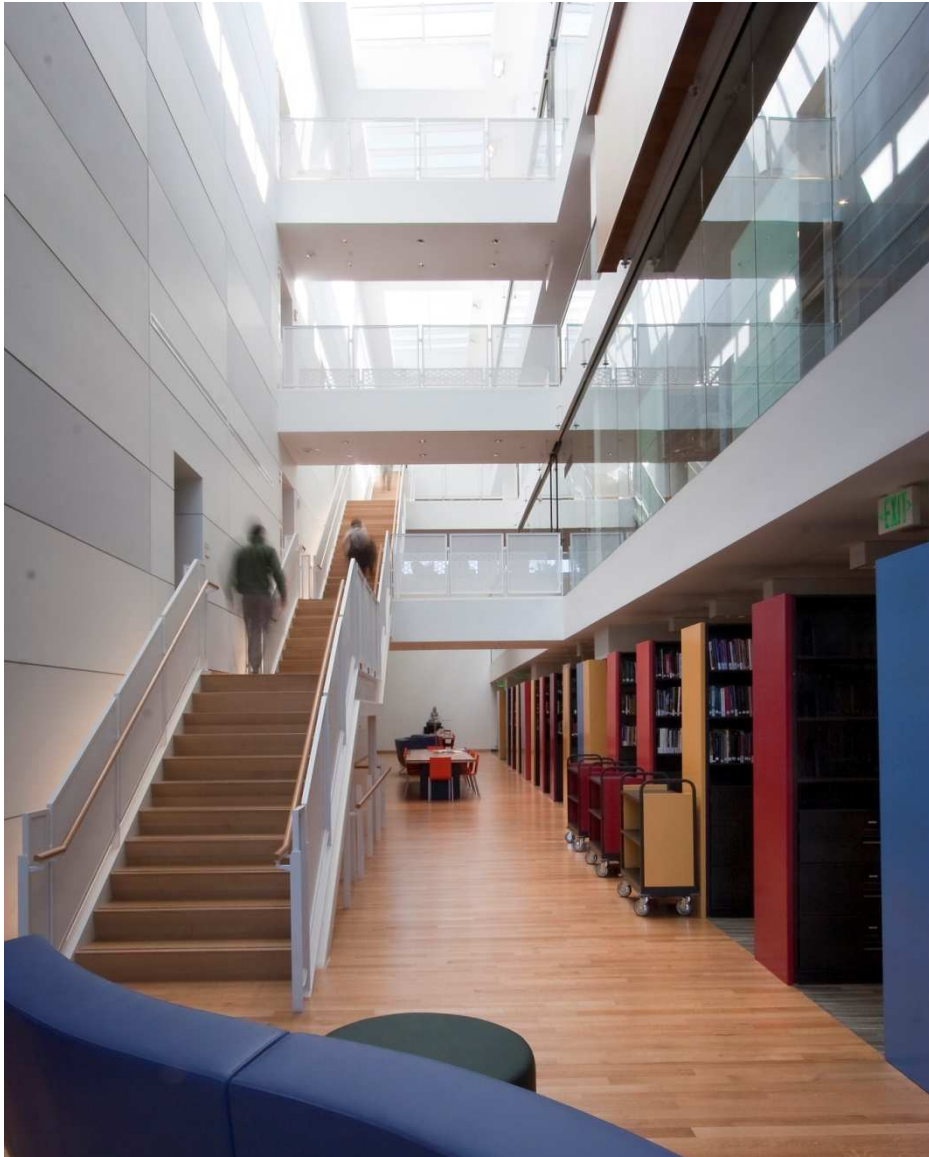
Goucher College Athenaeum



Goucher College Athenaeum



Goucher College Athenaeum



Goucher College Athenaeum



Goucher College Athenaeum



Goucher College Athenaeum

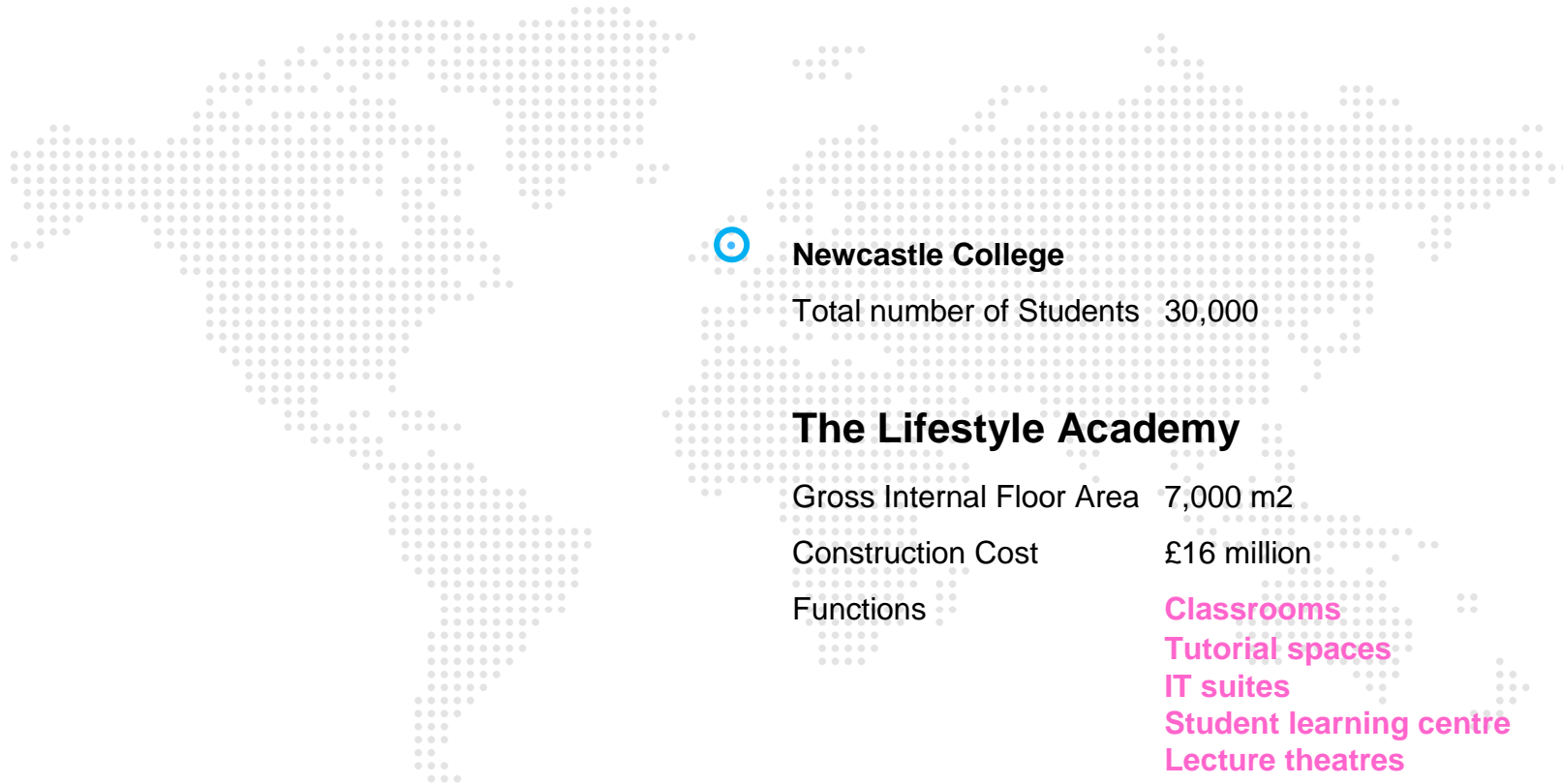


Goucher College Athenaeum

Newcastle College
Lifestyle Academy



Newcastle College Lifestyle Academy



Newcastle College

Total number of Students 30,000

The Lifestyle Academy

Gross Internal Floor Area 7,000 m²

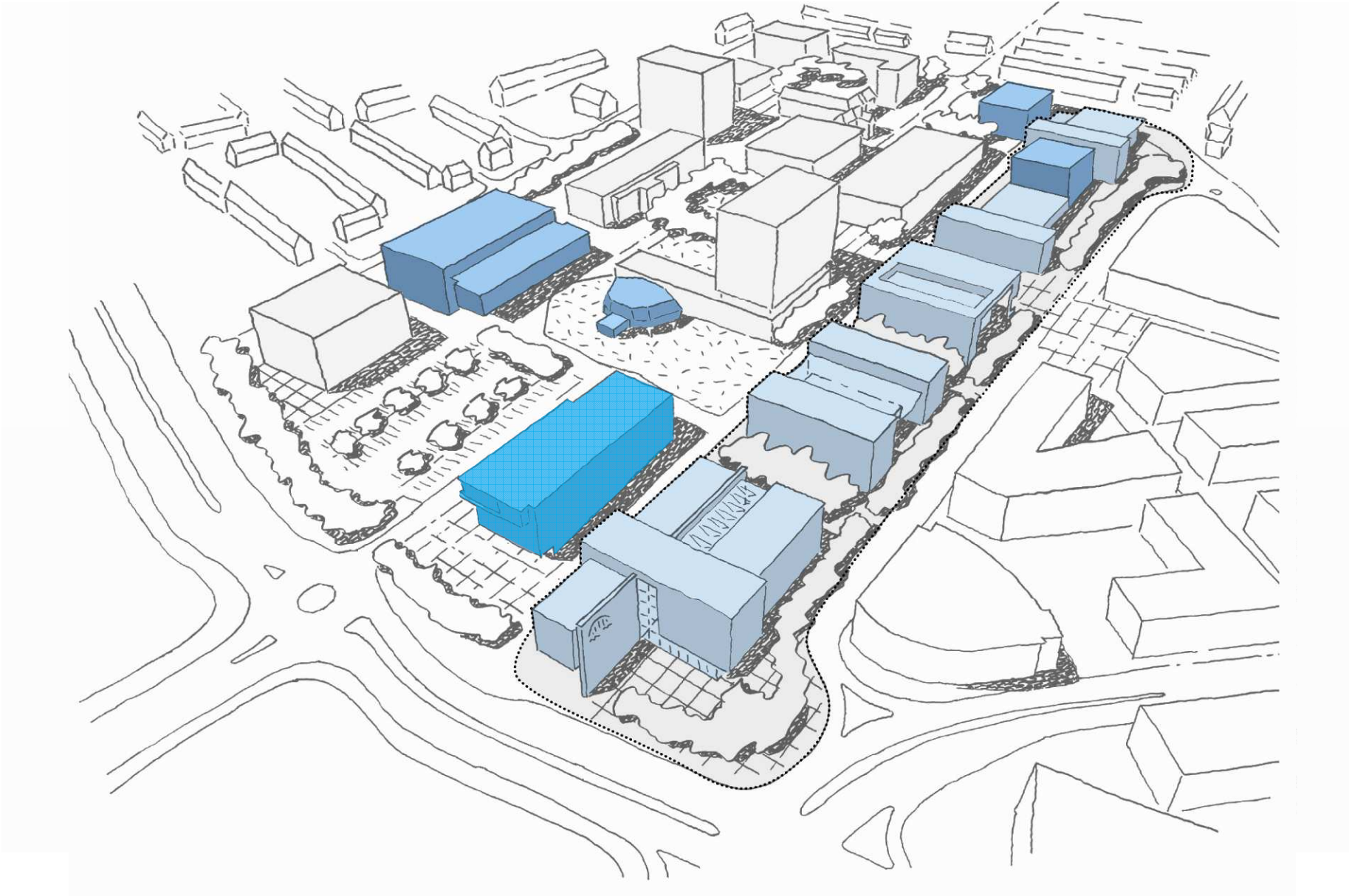
Construction Cost £16 million

Functions

- Classrooms
- Tutorial spaces
- IT suites
- Student learning centre
- Lecture theatres
- Hair salon
- Beauty salons
- Wet treatment 'spa' area
- Gym
- Fitness studio
- Bar
- Restaurant
- Bistro area



Newcastle College Lifestyle Academy

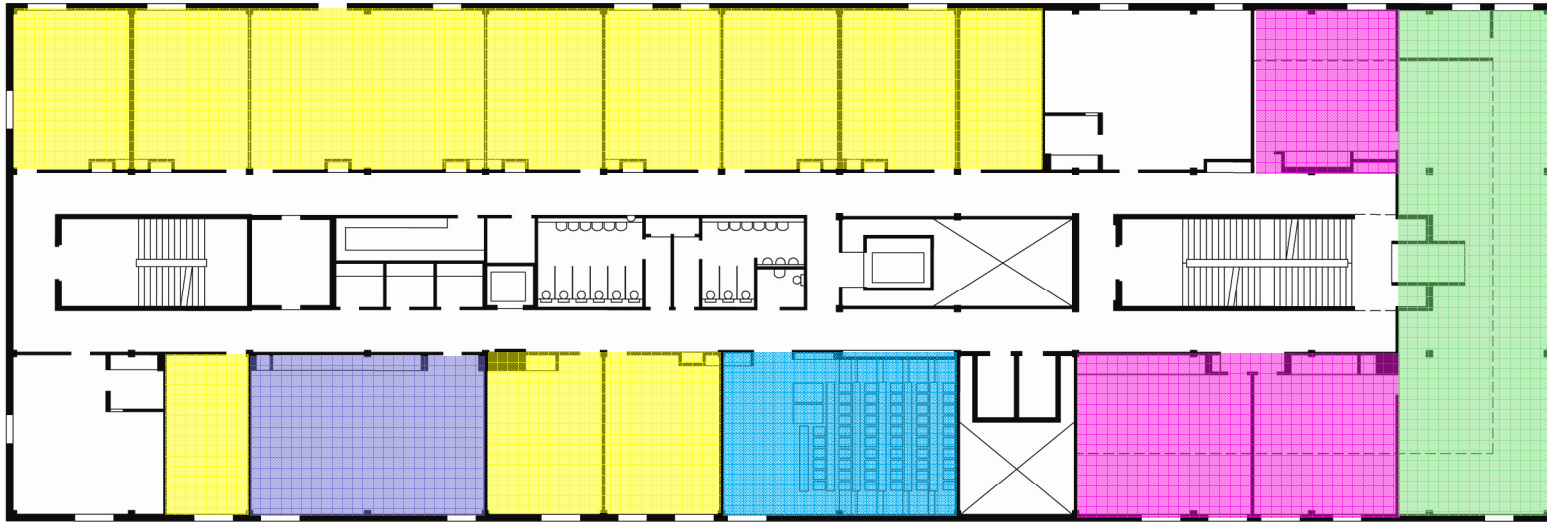


Newcastle College Lifestyle Academy



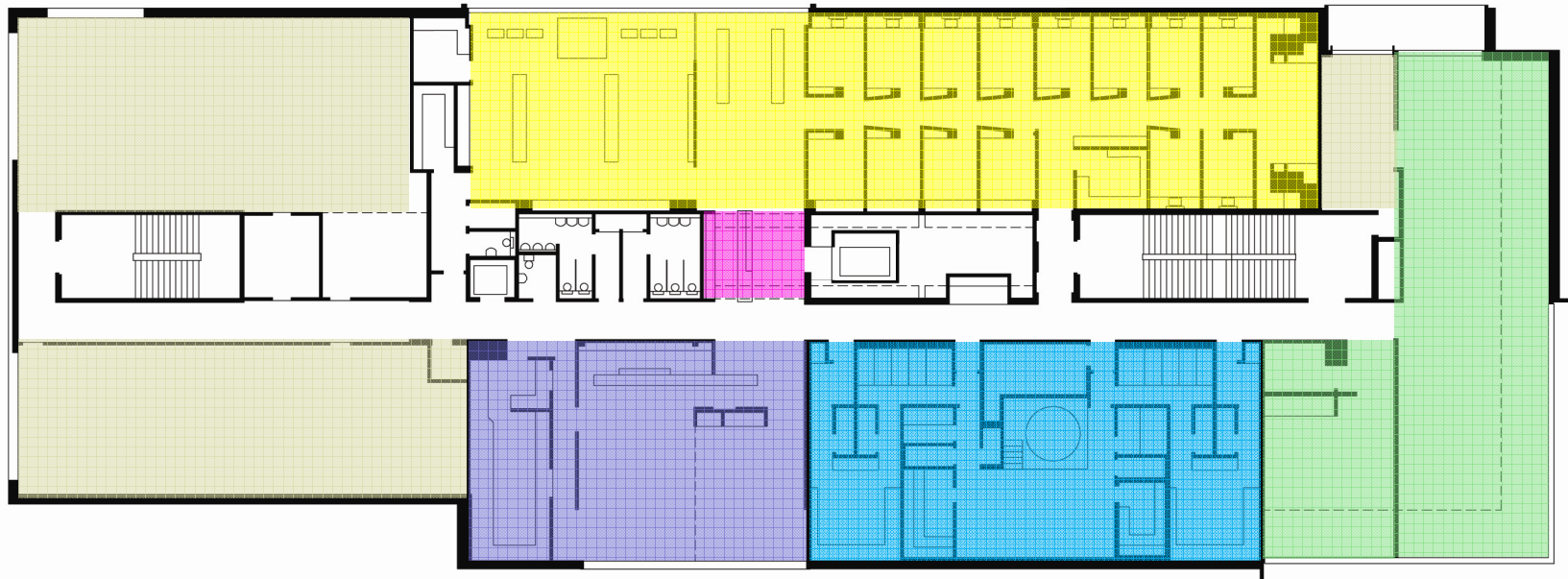
GROUND FLOOR

- Training & Service Kitchen
- Bistro
- Classrooms
- Offices
- Reception









FIRST FLOOR

-  Lecture Theatre
-  Bio mechs Labs
-  Classrooms
-  Learning Centre
-  IT Suite



THIRD FLOOR

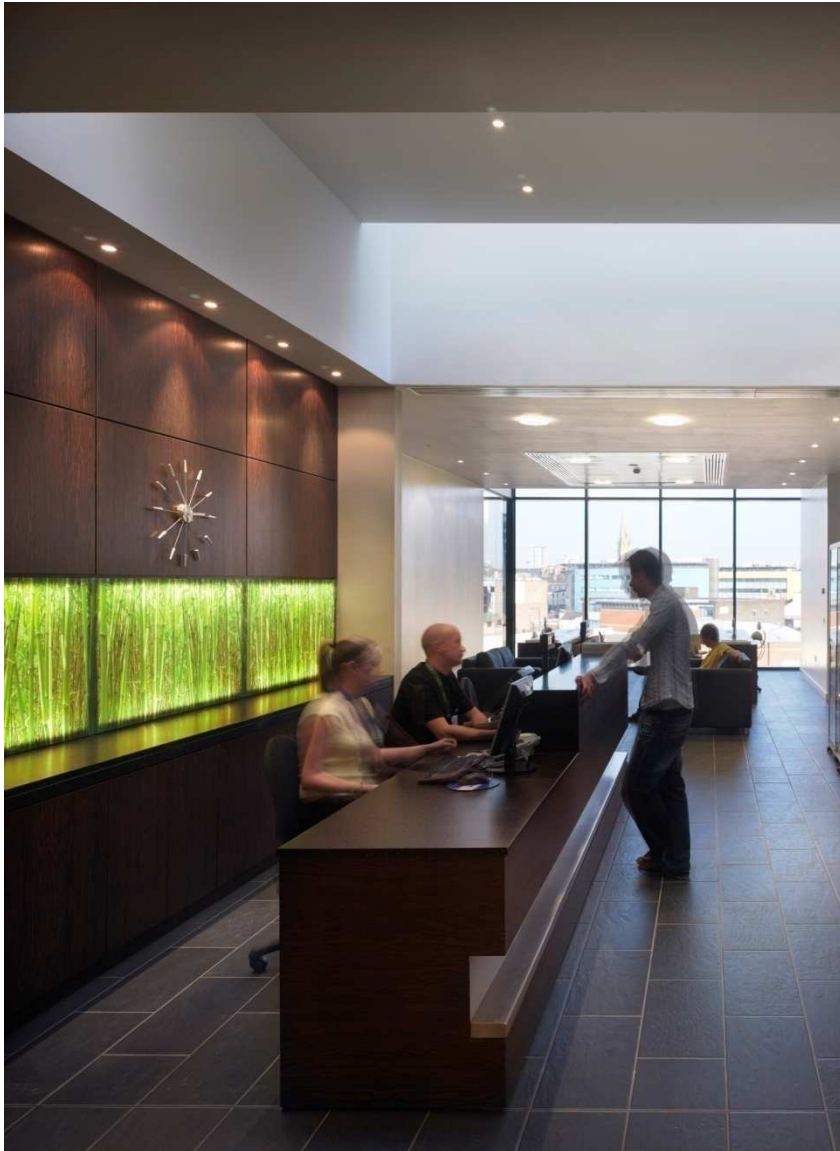
- | | |
|--|---|
|  Spa |  Gym |
|  Bar/Restaurant |  Reception |
|  Hair, Nails and Beauty |  Plant Rooms |



Newcastle College Lifestyle Academy



Newcastle College Lifestyle Academy



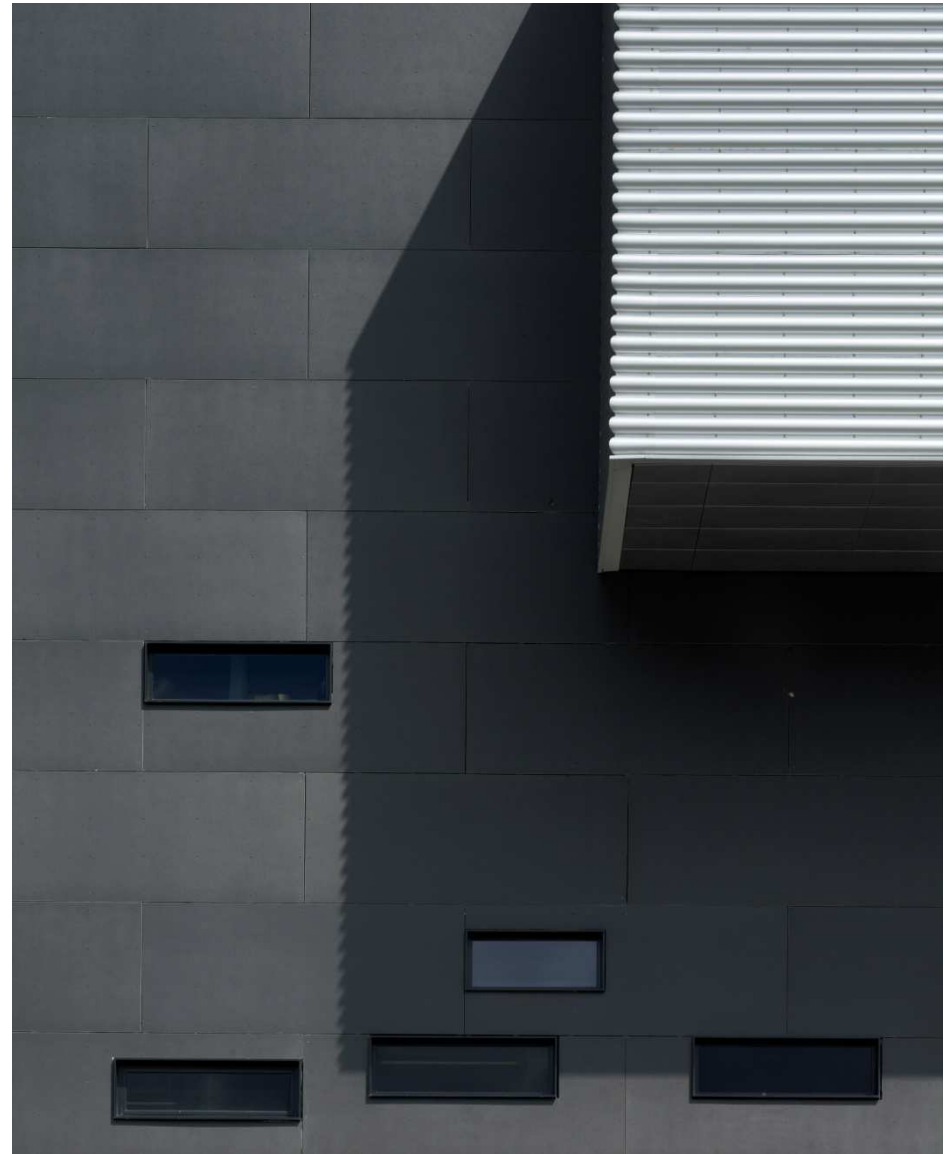
Newcastle College Lifestyle Academy



Newcastle College Lifestyle Academy



Newcastle College Lifestyle Academy



Newcastle College Lifestyle Academy

University Town Library
Shenzhen, China



University Town Library Shenzhen



University Town Shenzhen Library

Shenzhen Library of Science and Technology is shared by graduate schools of four universities: **Peking University, Tsinghua University, Harbin Institute of Technology** and **Nankai University**, and **open to the local residents.**

Library GFA 40,530 m2

Administrative Centre GFA 6,200 m2

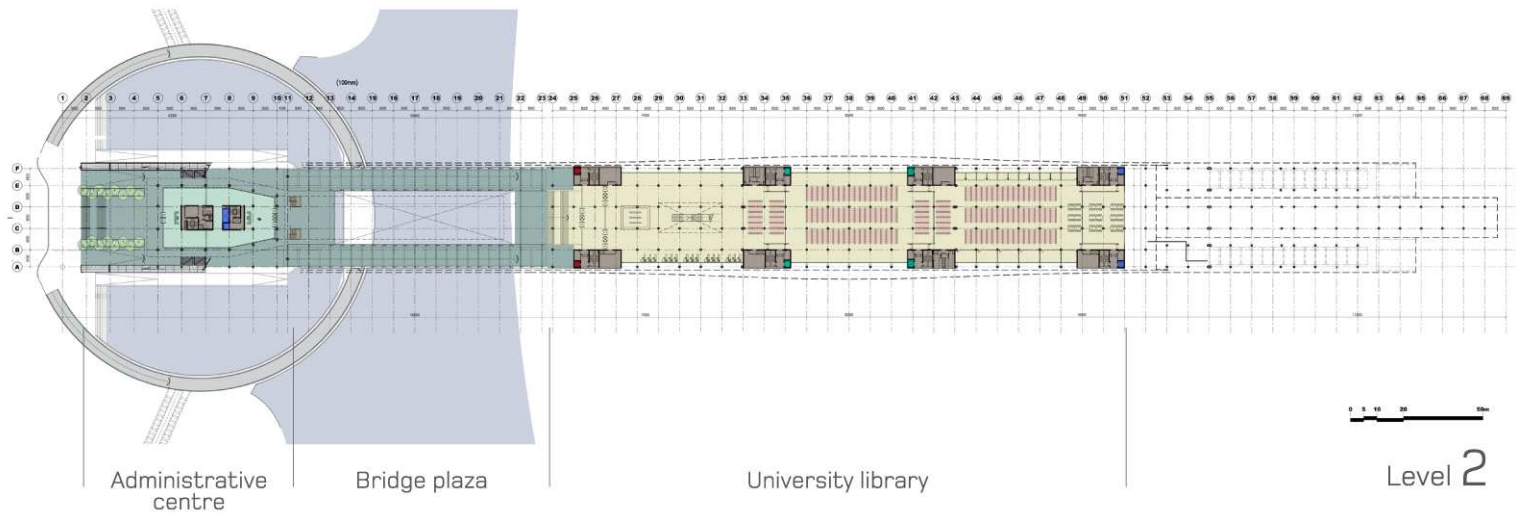
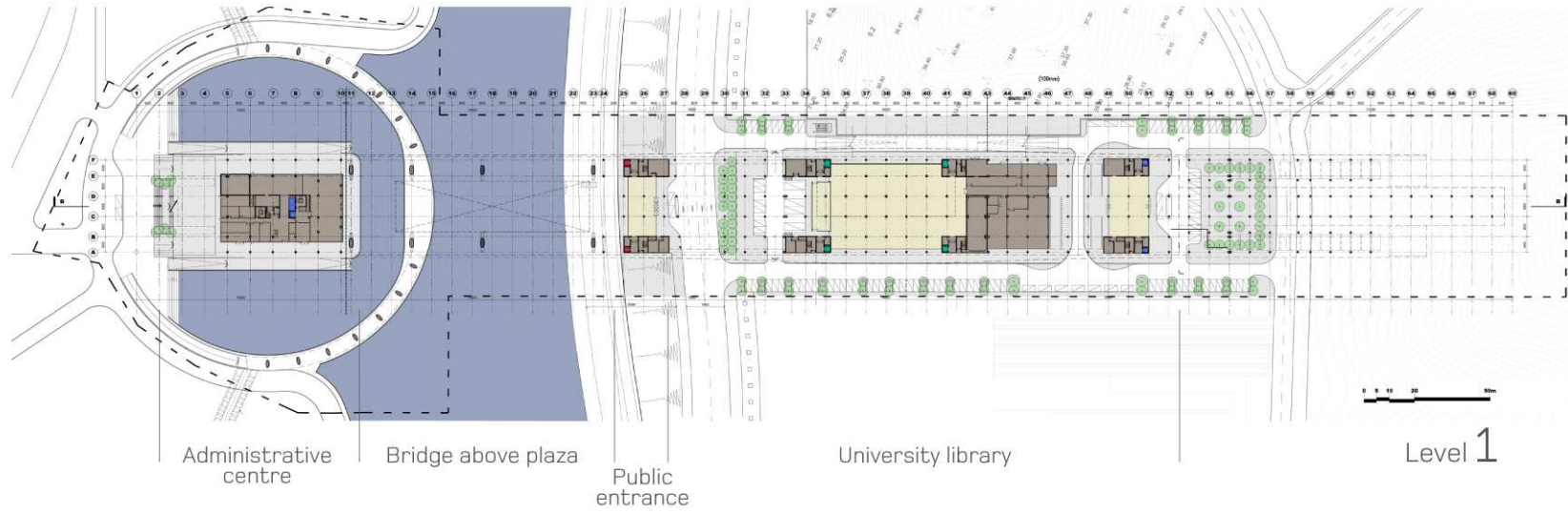
Building Height 27m (5 storeys)

Length 480m

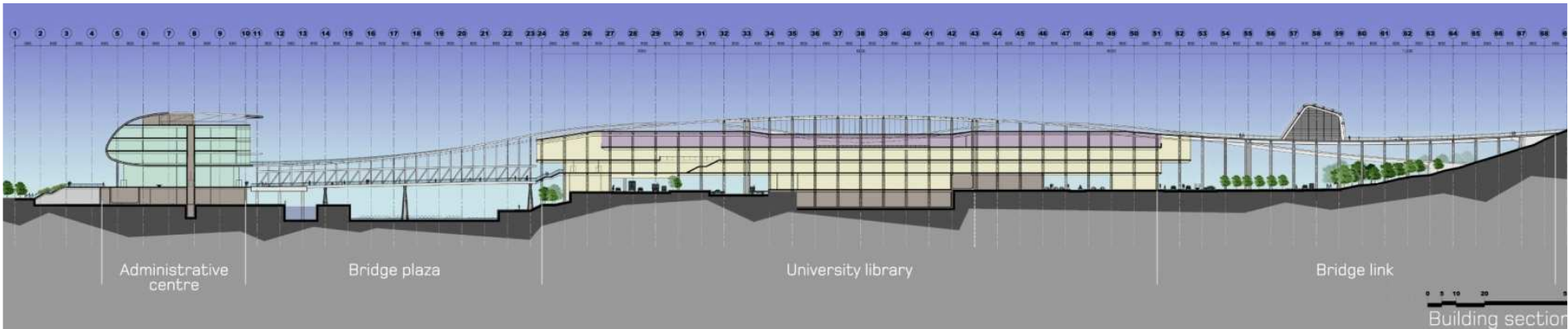
- Functions
- Library
 - Bridge
 - Conference
 - Exhibition Hall
 - Administration



University Town Library Shenzhen



University Town Library Shenzhen



University Town Library Shenzhen



University Town Library Shenzhen



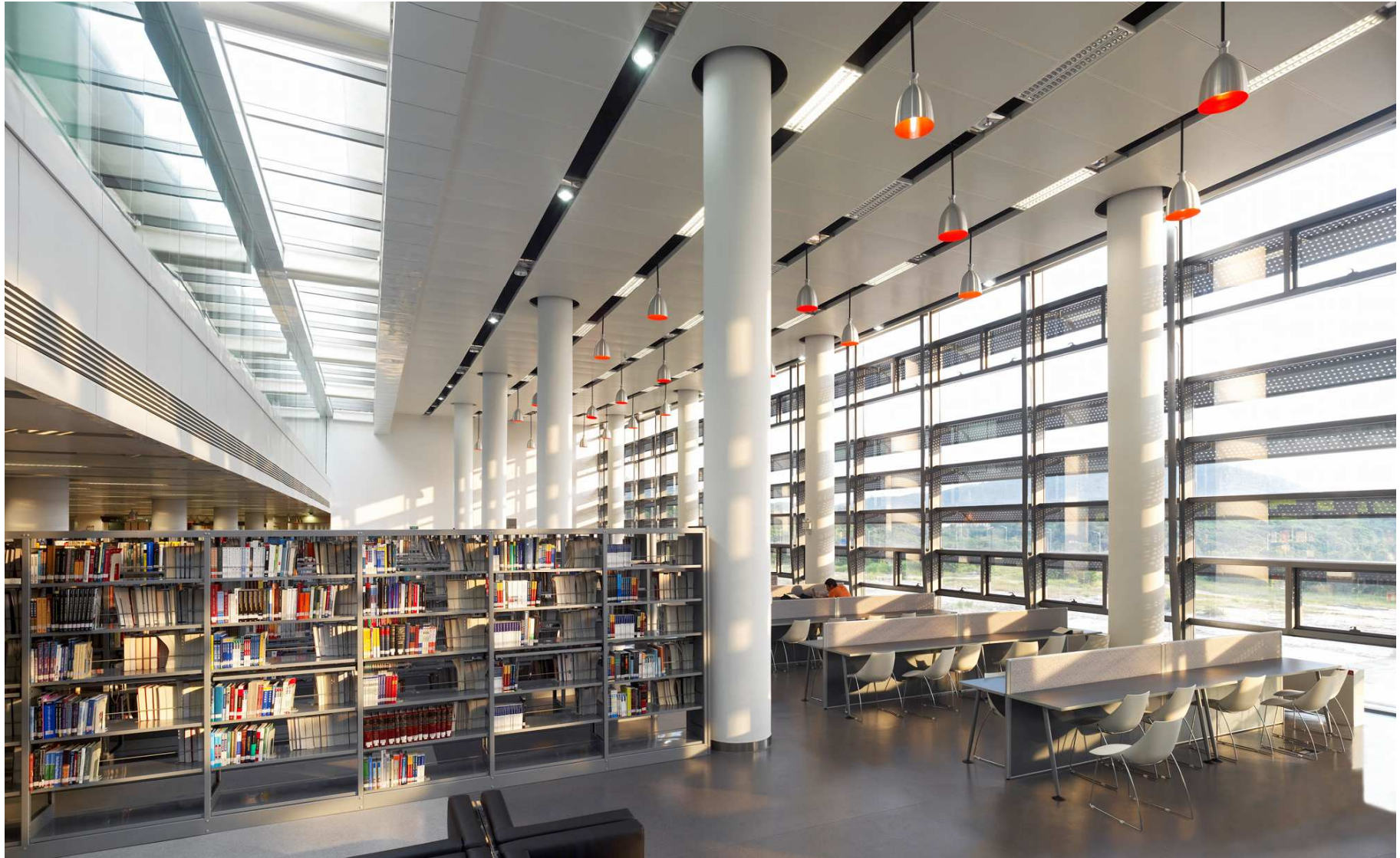
University Town Library Shenzhen



University Town Library Shenzhen



University Town Library Shenzhen



University Town Library Shenzhen



University Town Library Shenzhen

What next?...





Architects & Masterplanners