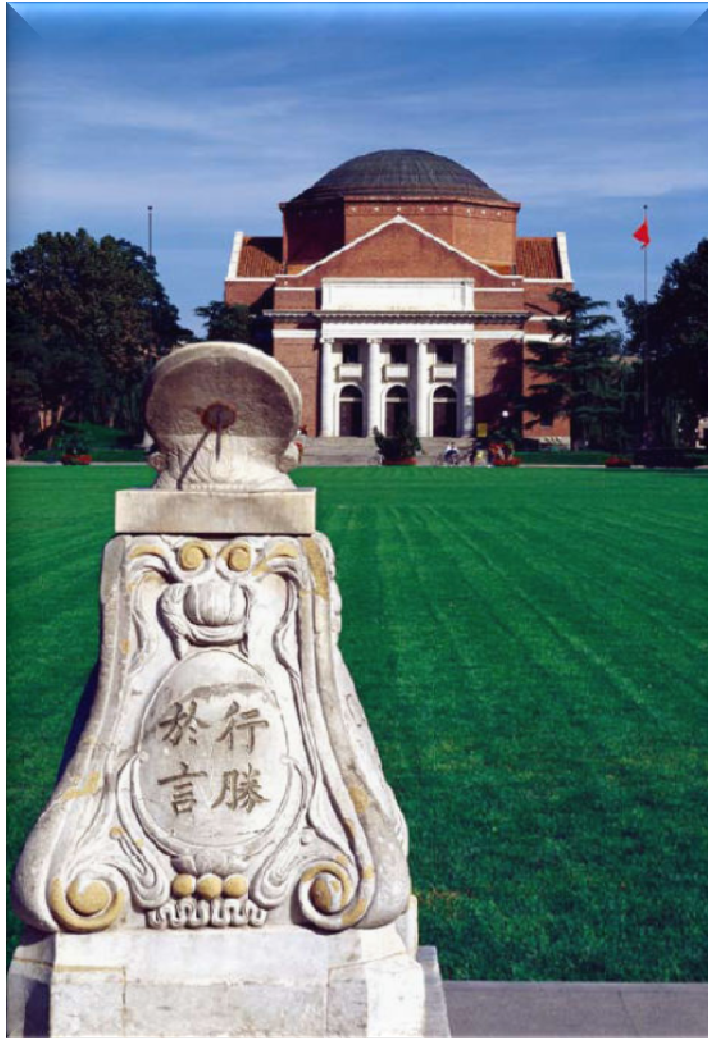


*Higher Education Spaces and Places: For learning, innovation and knowledge exchange*



## **Cross-regional University Partnerships in China's Western Development**

**Dr Zhou Zhong**

Institute of Education

**Tsinghua University**

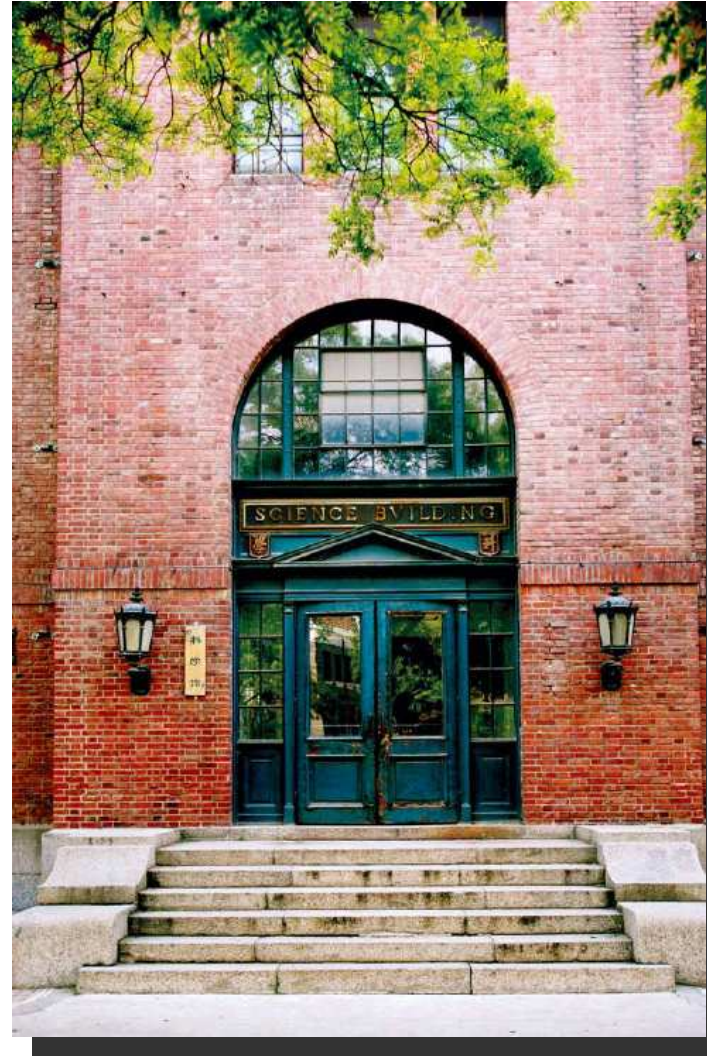
Beijing, China

[zhouzhong@tsinghua.edu.cn](mailto:zhouzhong@tsinghua.edu.cn)

*(Riga, 7.12.2009)*

# OUTLINE

1. Question
2. Context
3. China
4. Tsinghua
5. Conclusions

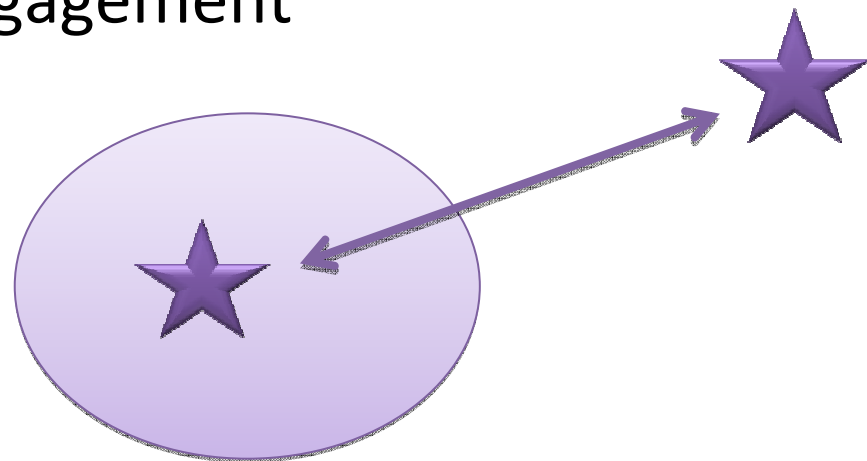


# 1. Question

*Creating sustainable learning and knowledge exchange environments across cities and regions*

**What and how does the university contribute to regional development?**

- ✓ fundamentally a spatial issue
- ✓ university-region engagement



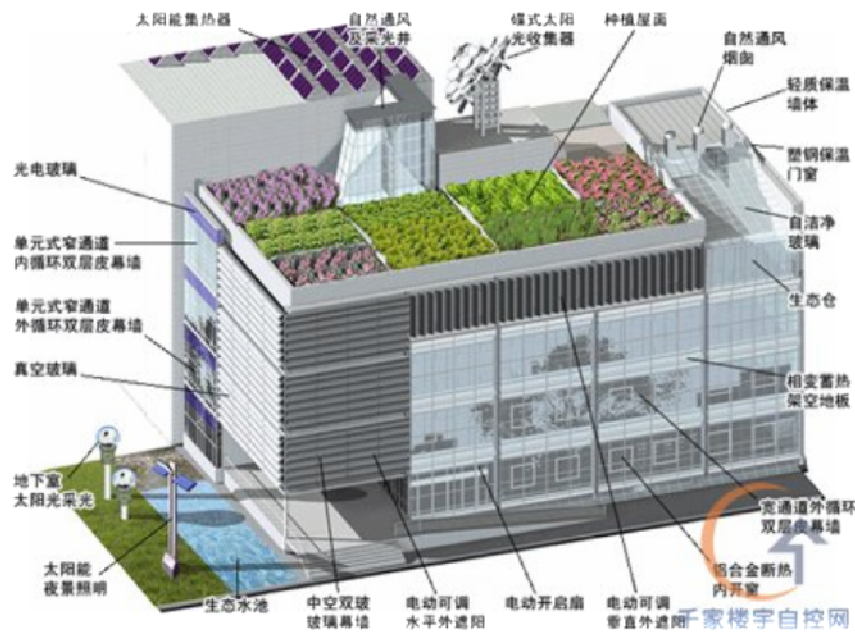
# Tsinghua University



- **'Young' & 'old'**
  - **Big**
  - **Comprehensive**
  - **International**
  - **Green**
- Found in 1911
  - Top 1~2 in China
  - *The Times Ranking 2009*: 49
  - Campus: 384 acres
  - 35,400 students (postgraduate 21,000)
  - 2,500 international students
  - 7,062 faculty & staff (2,829 FT faculty)
  - 15 colleges, 55 departments, 45 labs
  - 50 spin-off companies
  - Engineering & Science, Medicine  
Arts & Humanities, social sciences
  - Undergraduate: 62 programmes
  - Postgraduate: 230 programmes

# Green Campus

- Environment-friendly, resource-conserving
- Green in education, green technology, and green culture



# Science Parks and Research Institutes

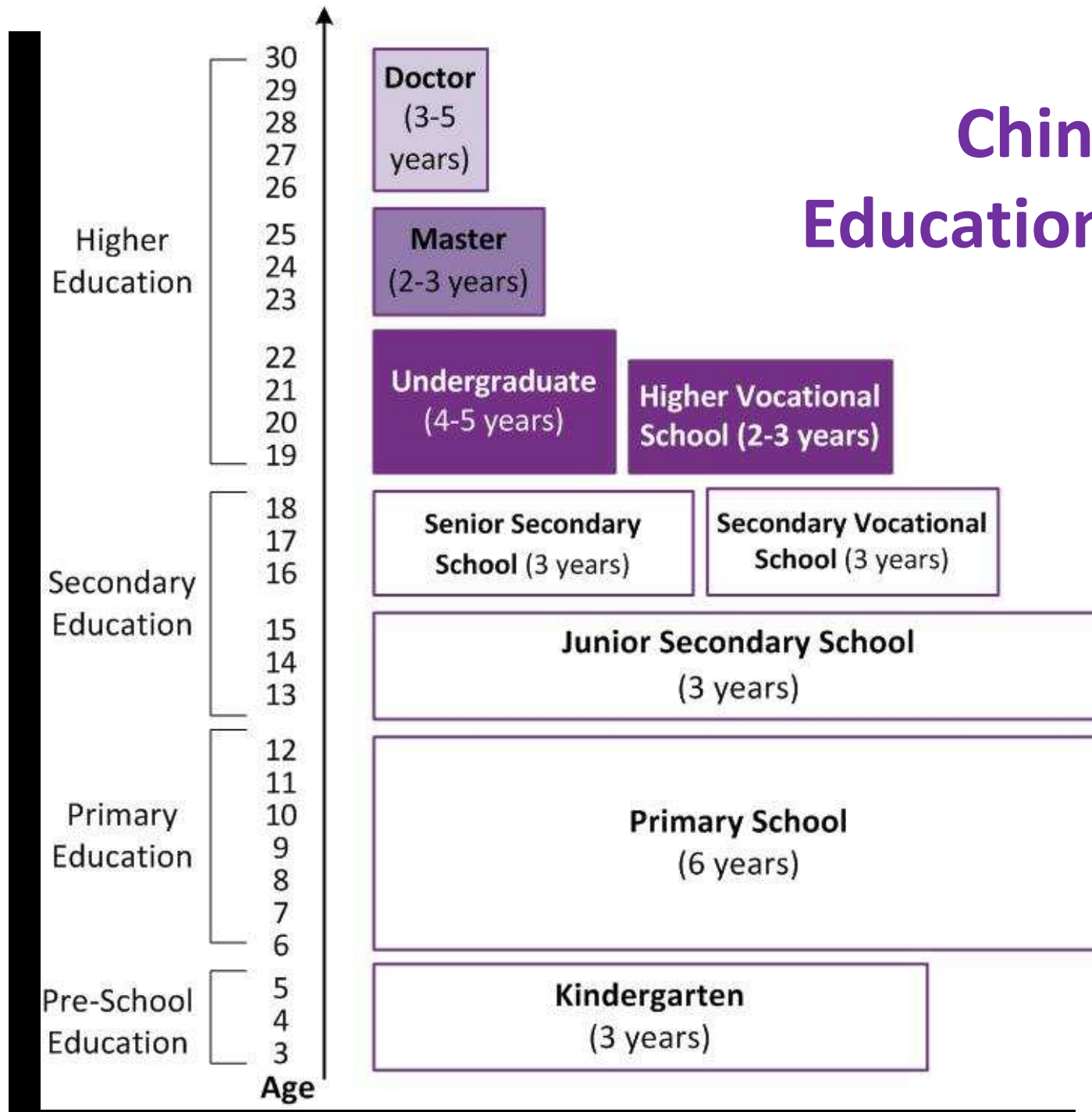
- Tsinghua Science Park in Beijing + 10 regional science parks
- 4 regional Research Institutes



*Spatial and locational patterns of Chinese higher education*

## **2. CONTEXT**

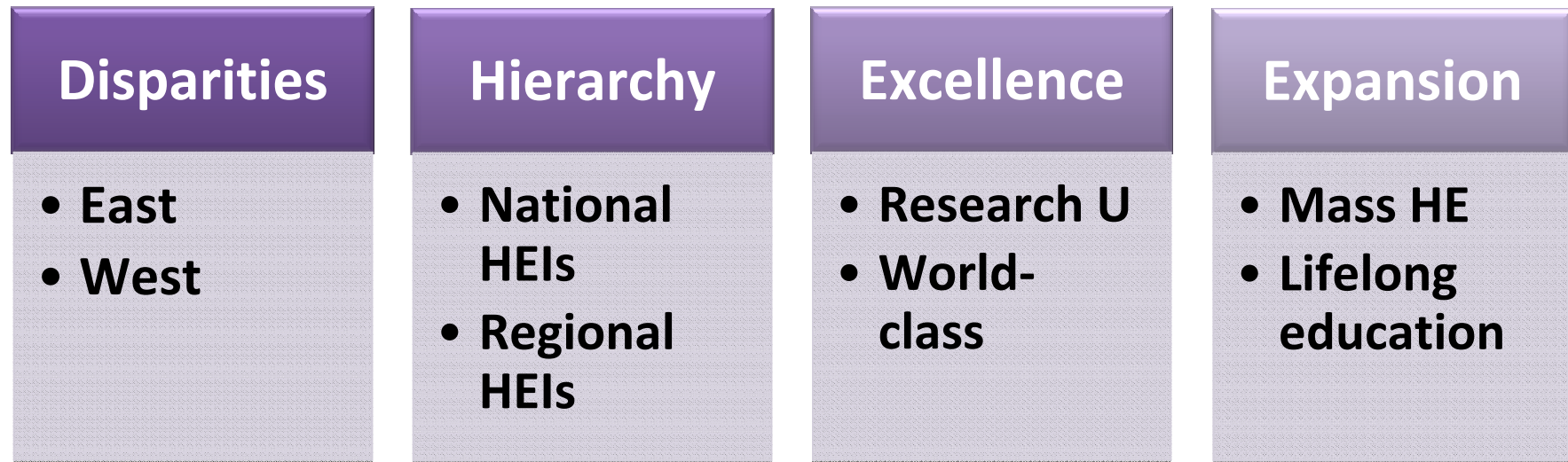
# Chinese Education System





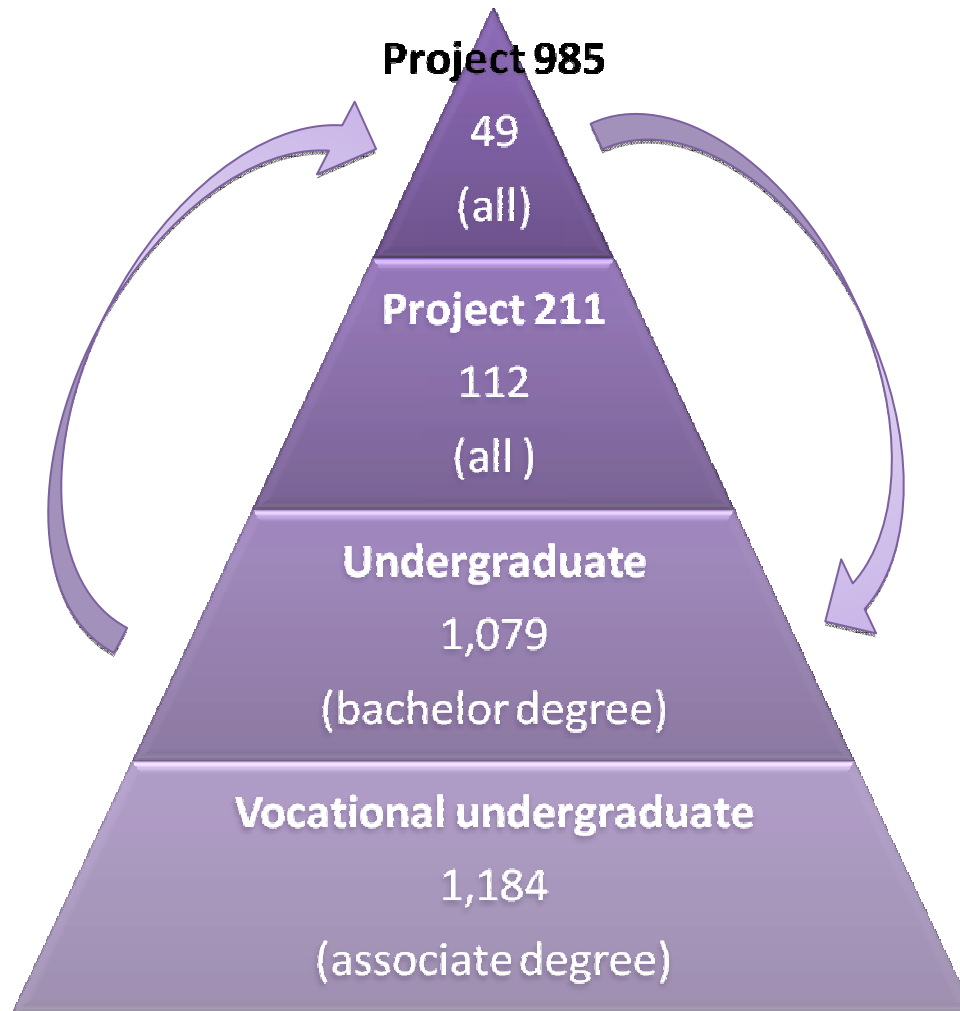
# Challenges to Chinese HE

*A HE system from **big to strong**  
(2008: 29 million HE students, GRE 23.3%)*



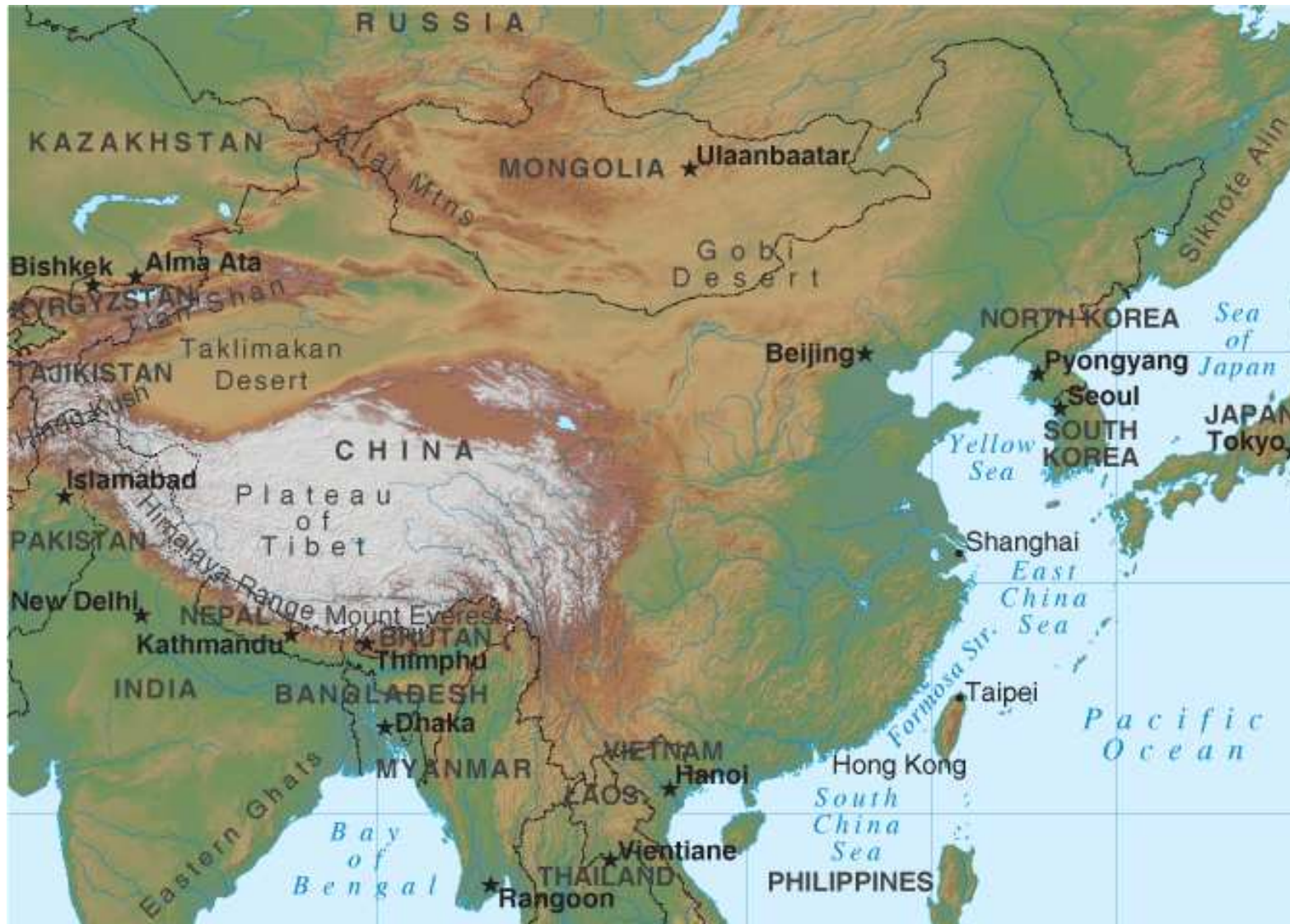
*Creating sustainable learning & knowledge exchange environments across cities and regions*

# Chinese HE System



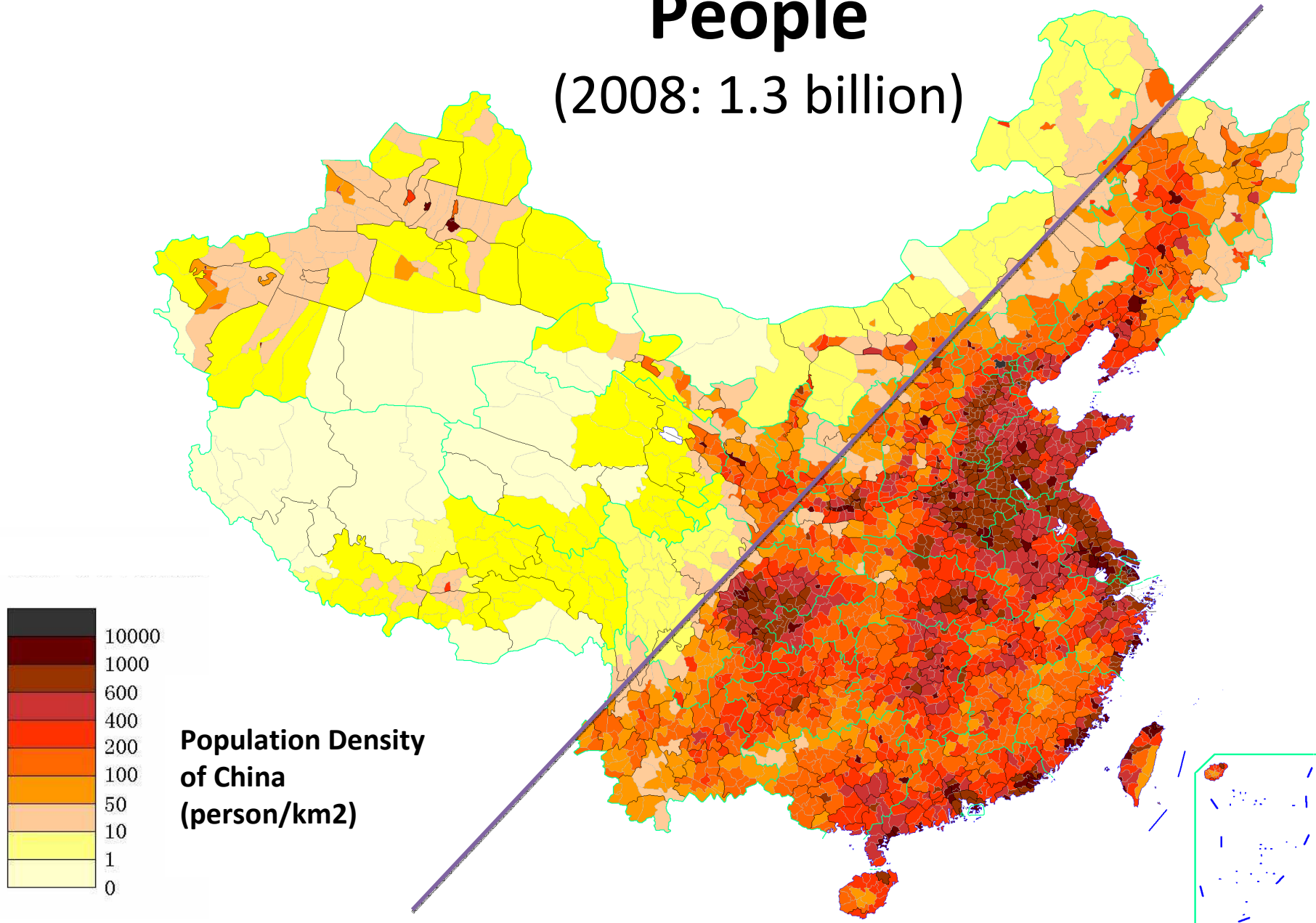
- Governance
- Teaching & Learning
- Research
- Infrastructure
- Culture
- Internationalisation

# Land

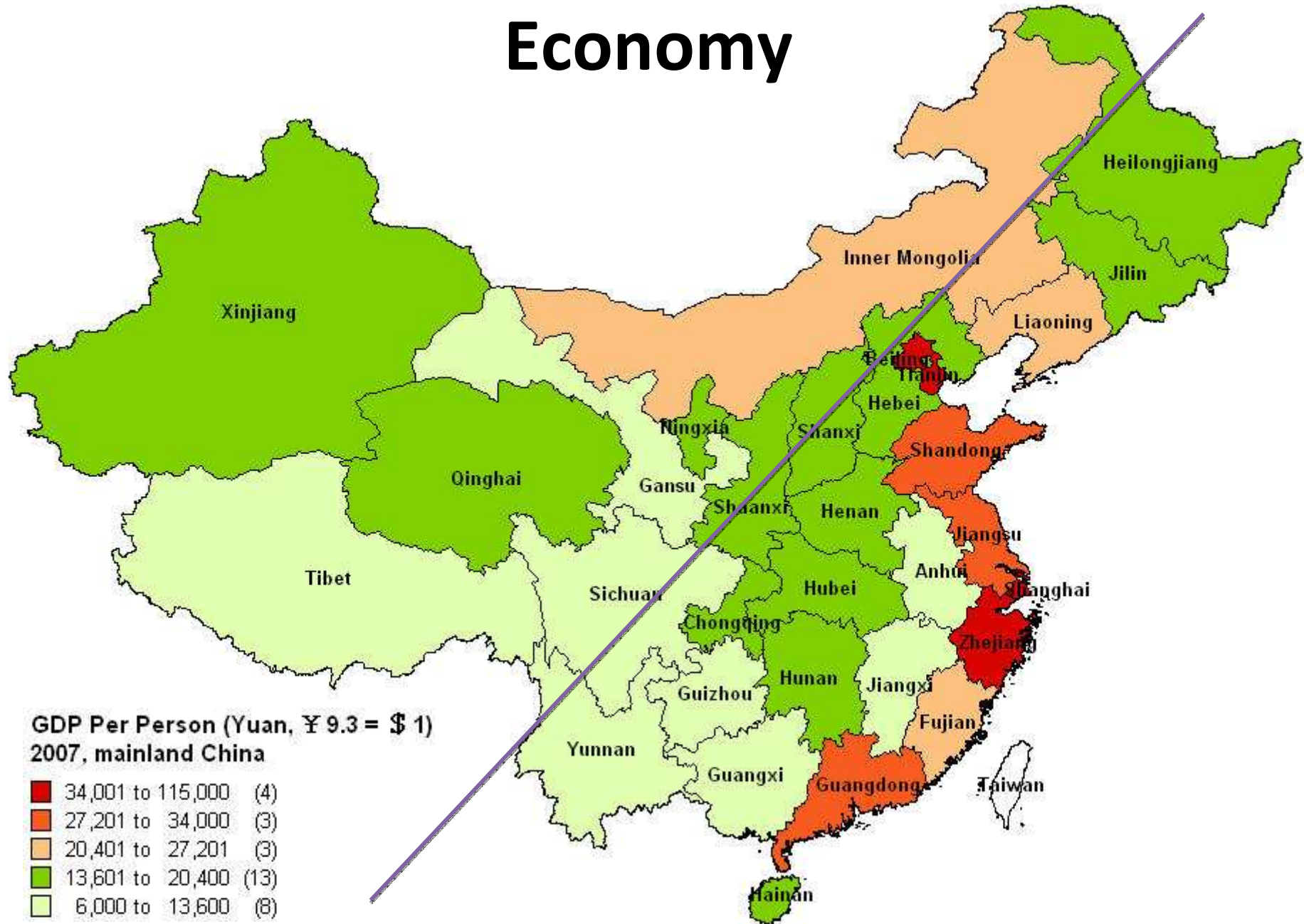


# People

(2008: 1.3 billion)



# Economy

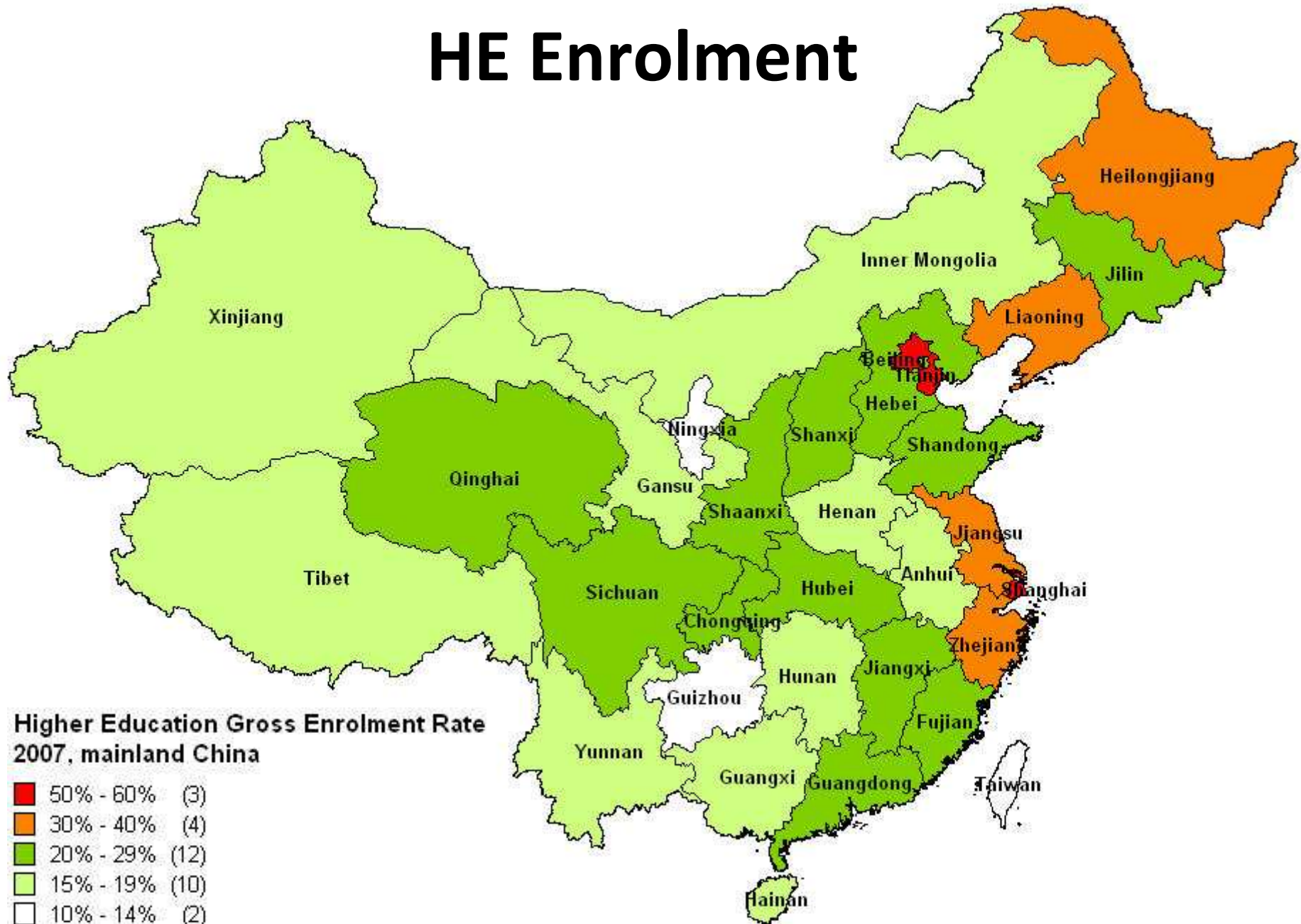


# China Western Development Strategy

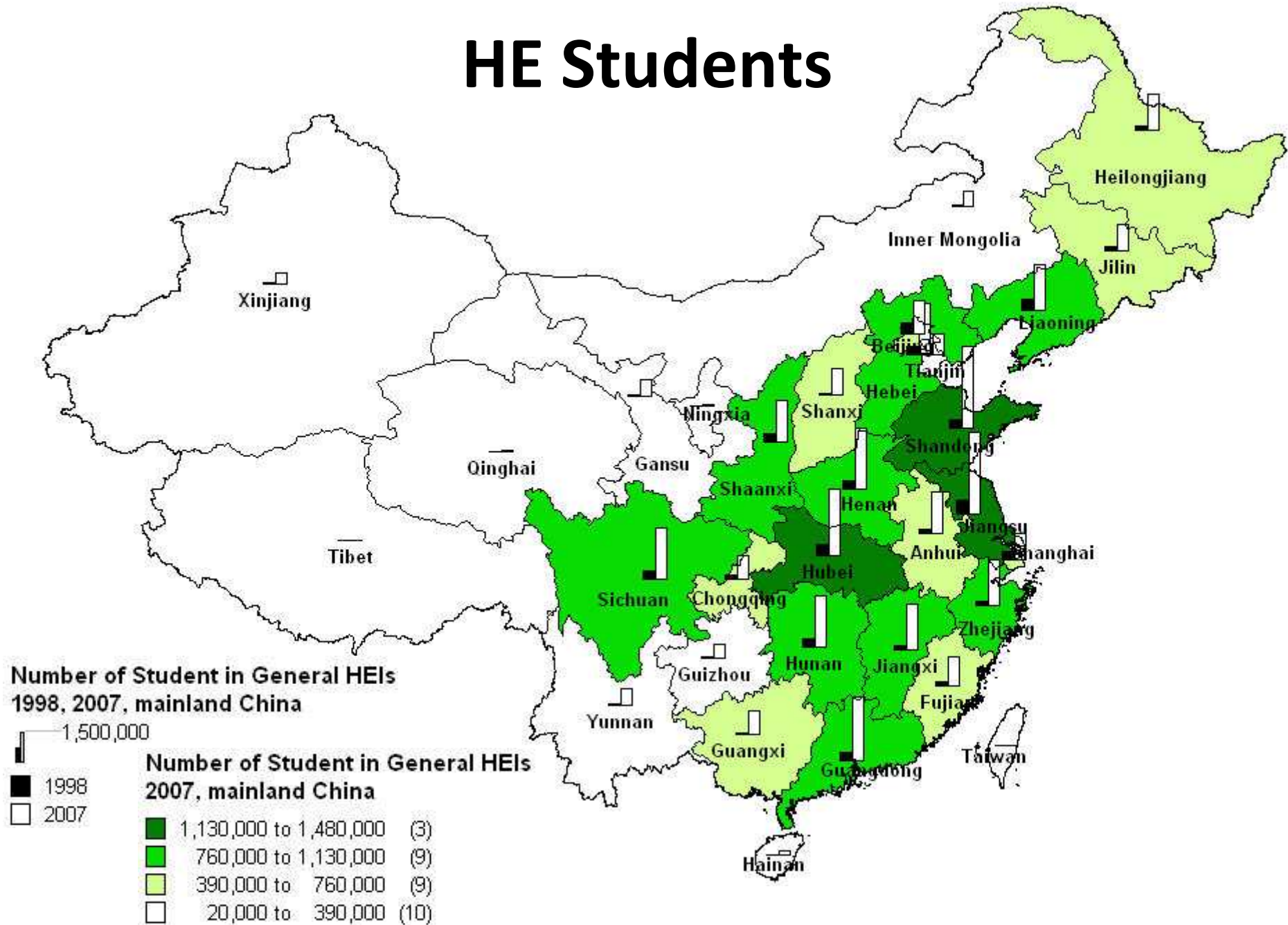
(since 1999)



# HE Enrolment

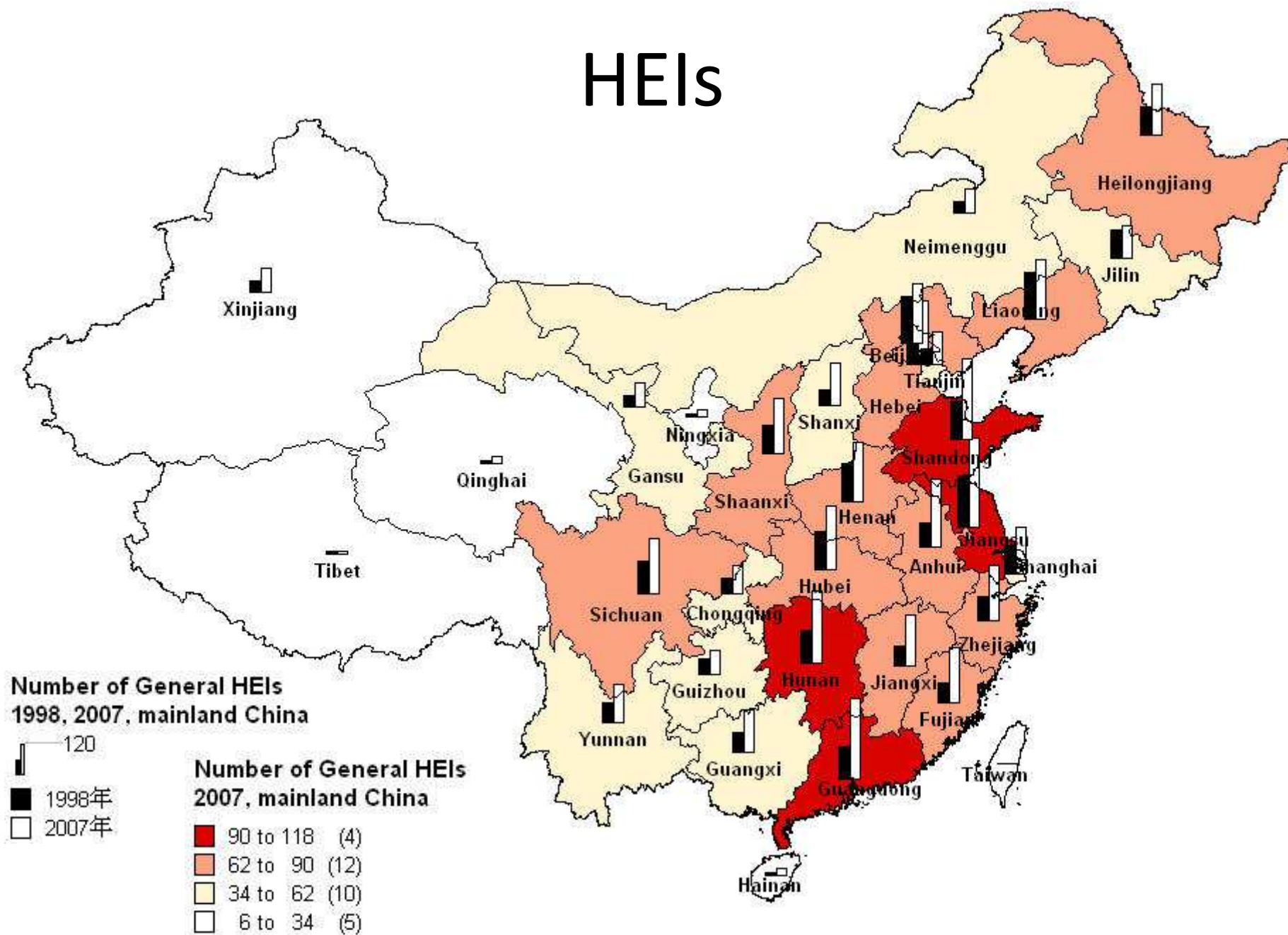


# HE Students





# HEIs



*Regional & institutional development*

### **3. EAST-WEST UNIVERSITY PARTNERSHIPS (SINCE 2001)**

# E13 + W13 partners (2001)



# E64 + W38 partners (2009)





清華大學



青海大學  
Qinghai University

*Hand-in-hand*

## 4. TSINGHUA-QINGHAI PARTNERSHIP (SINCE 2001)

# Tsinghua-Qinghai Partnership (since 2001)

## Qinghai

- Found in 1958
- Top 300 in 2001 → Top 110 in 2008

### Teaching-research university

- 21,500 students (p.g. 480)
- 4,177 faculty & staff (1,189 faculty)
- 10 colleges, 28 departments
- Engineering & Science,  
Medicine, Agriculture,  
Economics & Management, Law
- Undergraduate: 61 programmes
- Postgraduate: 20 programmes
- Campus: 192 acres

## Tsinghua

- Found in 1911
- Top 1~2 in China

### Research university

- 35,400 students (p.g. 21,000)
- 7,062 faculty & staff (2,829 faculty)
- 15 colleges, 55 departments
- Engineering & Science,  
Medicine,  
Arts and Humanities
- Undergraduate: 62 programmes
- Postgraduate: 230 programmes
- Campus: 384 acres

# Tsinghua Strategy

## Leadership

- T-Q partnership as part of Tsinghua's world-class university strategy

## Objective

- Teaching & learning
- Give + create : faculty + curricula + lab development

## Organisation

- T-Q coordination office: annual visits & meetings
- University - college/department - professor delegations

## Outreach

- National government: Education, Finance, etc.
- Regional and local governments
- China U. of Geology; Northwest Agriculture & Forestry U.

## Research

- Since 2006: *Theory and practice of partnerships between HEIs in eastern and western regions in China*

# Tsingua Tasks

Creating units of excellence  
Lowering 'the gravity centre'



University

College

Department

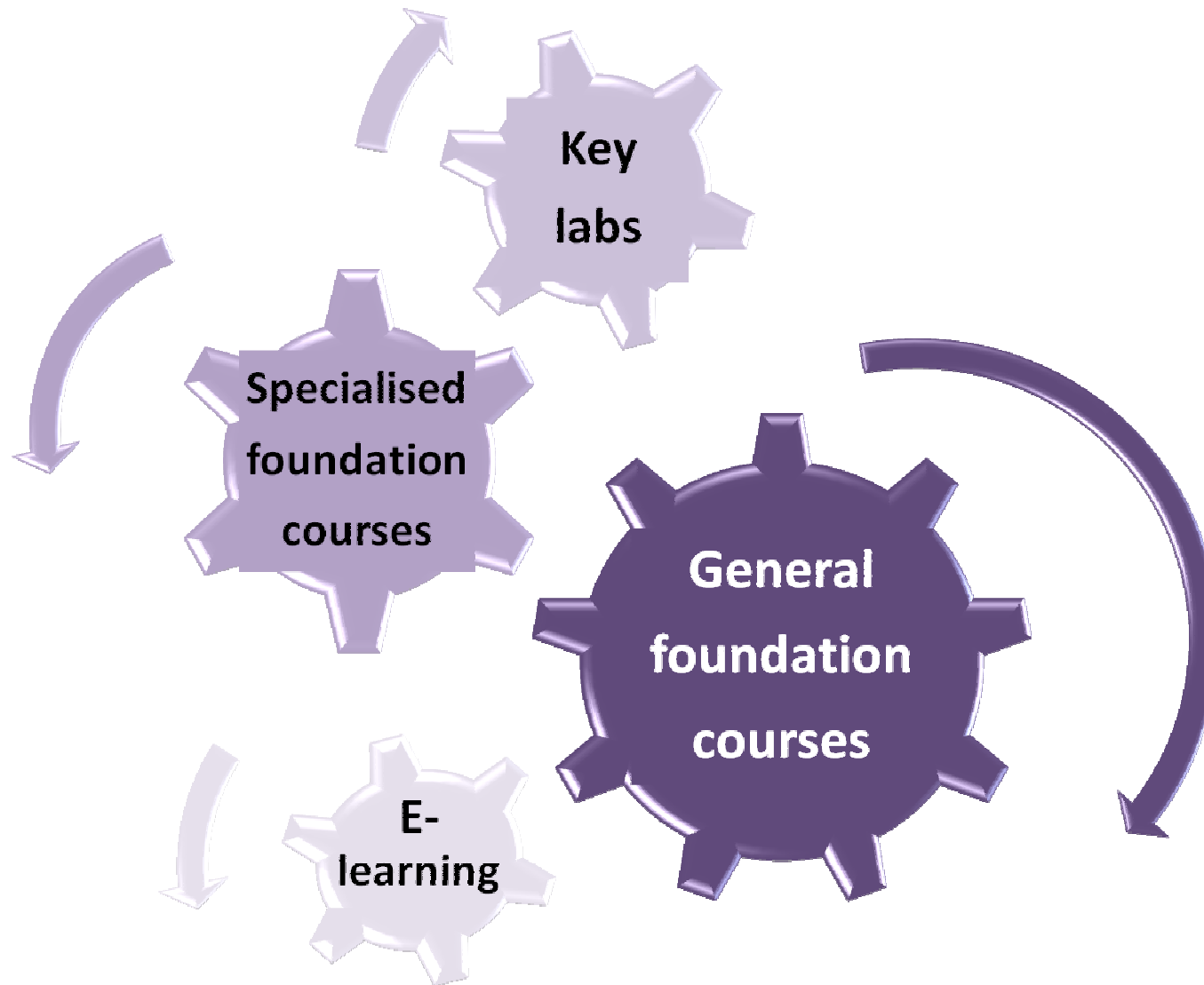
Centre

Faculty

Student



# Curriculum Development



# Tsinghua E-courses (Satellite/internet)

	<i>General foundational course (spring 2006-07)</i>	<i>Mode of Delivery</i>
1	<b>History of science &amp; technology</b>	Live
2	<b>History of Art</b>	Record
3	<b>History of western philosophy</b>	Record
4	<b>International politics and China</b>	Live
5	<b>Selected readings of Confucian classics</b>	Live
6	<b>Chinese culture and antiques</b>	Live
7	<b>Classic Chinese novels</b>	Live
8	<b>Selected readings of western masterpieces</b>	Live
9	<b>Western literary thoughts and works</b>	Record
10	<b>Psychology for college student</b>	Record

# Academic Development

(2001 - 2006)

Tsinghua College/Department	Qinghai College/Department
Civil engineering	Building engineering
Hydraulic engineering	Hydraulic engineering
Electrical engineering	
Mechanical engineering	Mechanical engineering
Material engineering	
Chemical engineering	Chemical engineering
Life sciences	Life sciences
Economics & Management	Finance & Economics

## T-Q college/department strategic planning

- Regional need
- Institutional need

## Development partnerships

- Faculty
- Curriculum
- Postgraduate education
- Lab
- Research
- Service

# Mechanical Engineering

## (2004-2006)

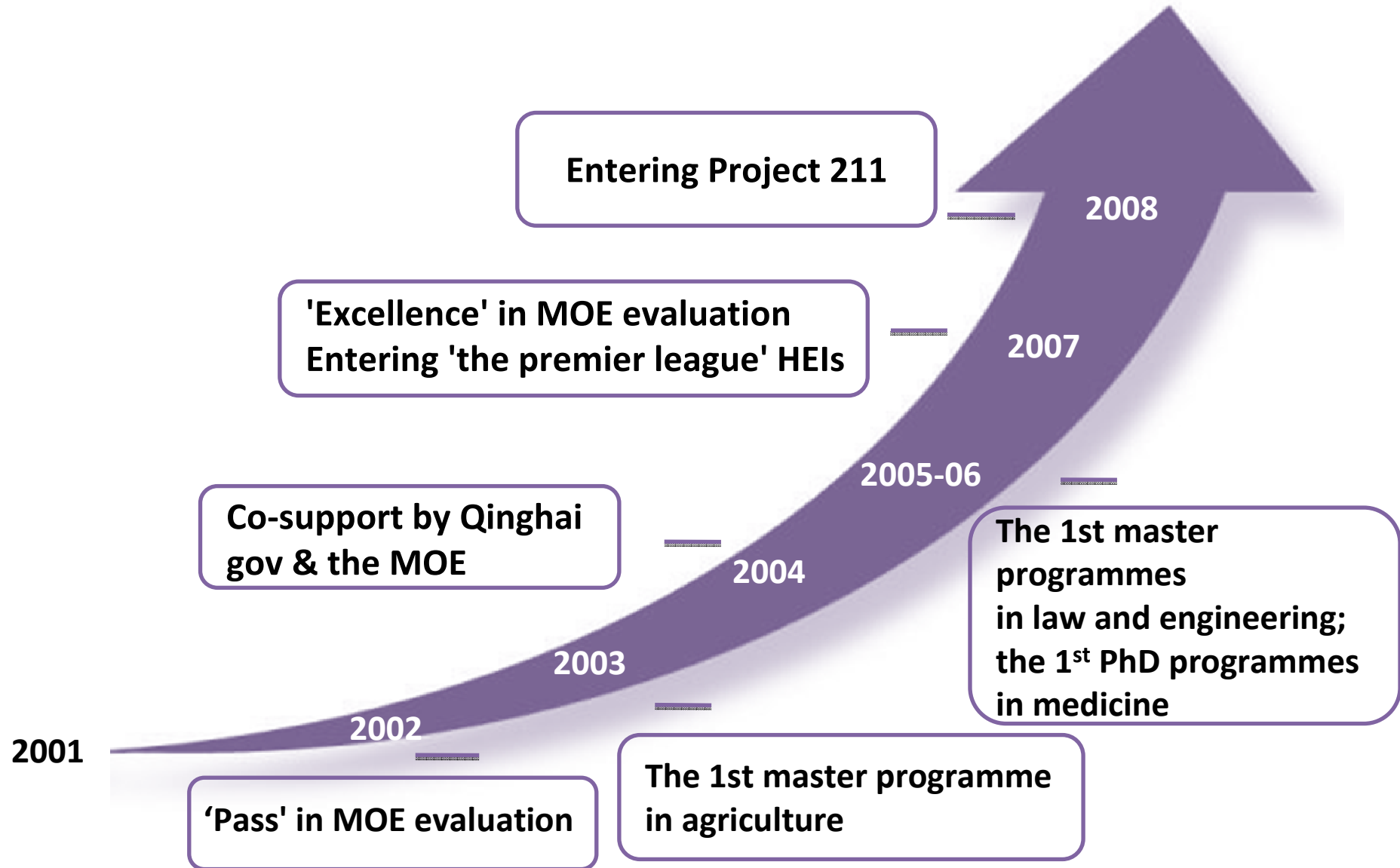
2004	<b>Research</b>	Co-applied for regional research contracts
	<b>Curriculum</b>	Co-developed core courses
	<b>Programme</b>	Co-developed master's programmes
	<b>Lab</b>	Co-planned a metalworking site infrastructure
2005	<b>Faculty</b>	Q → T: 2 visiting fellowships
	<b>Lab</b>	Co-build "Engineering material multimedia lab"
	<b>Research</b>	T → Q: 2 visiting professors + co-research projects
2006	<b>Faculty</b>	Co-organised a professional engineering master programme Q → T: 4 visiting fellowships T → Q: Dean and over 50 visiting faculties and staff
	<b>Curriculum</b>	Co-developed core courses and academic planning
	<b>Lab</b>	Co-planned and implemented lab development
	<b>Research</b>	T → Q: Provided ¥ 30,000 to use Tsinghua's national labs

# Computer Science & Technology

## (2004-2006)

<b>Leadership</b>	<ul style="list-style-type: none"> <li>• Tsinghua professors elected as the 1<sup>st</sup> dean and deputy dean</li> </ul>
<b>Faculty</b>	<ul style="list-style-type: none"> <li>• Senior Tsinghua faculties paired with junior Qinghai faculties</li> <li>• Varieties of faculty development activities</li> </ul>
<b>Curriculum</b>	<ul style="list-style-type: none"> <li>• Tsinghua design: curriculum, textbooks and learning materials</li> <li>• Core courses: undertook by Tsinghua faculties actual and virtual</li> <li>• Enhancing university-wide computer courses</li> </ul>
<b>Lab</b>	<ul style="list-style-type: none"> <li>• Tsinghua design: lab and practice site</li> <li>• Tsinghua giving: equipment and books</li> <li>• Created a wireless campus</li> <li>• Won regional and national funding for building key computer labs</li> </ul>
<b>Student</b>	<ul style="list-style-type: none"> <li>• Tsinghua faculties as tutors</li> <li>• Enriching student affairs</li> <li>• Tsinghua alumni fundraising for scholarships</li> </ul>
<b>Organisation</b>	<ul style="list-style-type: none"> <li>• Committees building</li> <li>• Introducing performance-based evaluation</li> </ul>

# Qinghai University's Progress



*Partnerships for sustainable development*

## **5. CONCLUSIONS**

# Research & Consulting

**Research project**  
(2006-2008)

- *Theory and practice of partnerships between HEIs in eastern and western regions in China*

**Research project**  
(2007-2010)

- *An analysis of the spatial patterns of Chinese HE resources and strategies for coordinated national development through university-region engagement*

**Policy consulting**  
(since 2001)

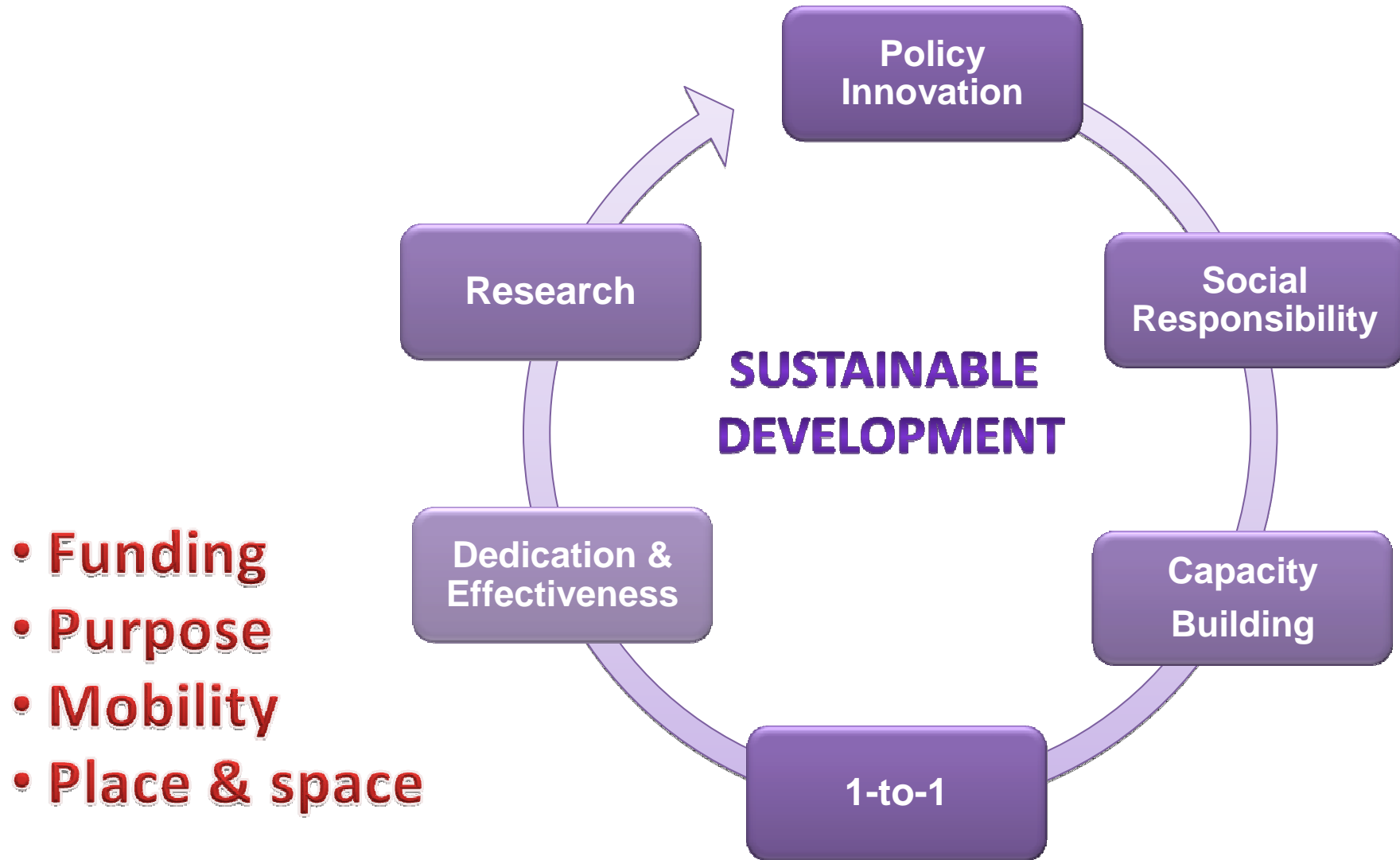
- *Central-regional-local governments  
eg → China higher education development strategy (2010-2020)*

**Institutional consulting**  
(since 2001)

- *E-W partnership universities:  
Training, evaluation, research, public promotion...*



# Lessons & Experience



# Coordinated HE Development

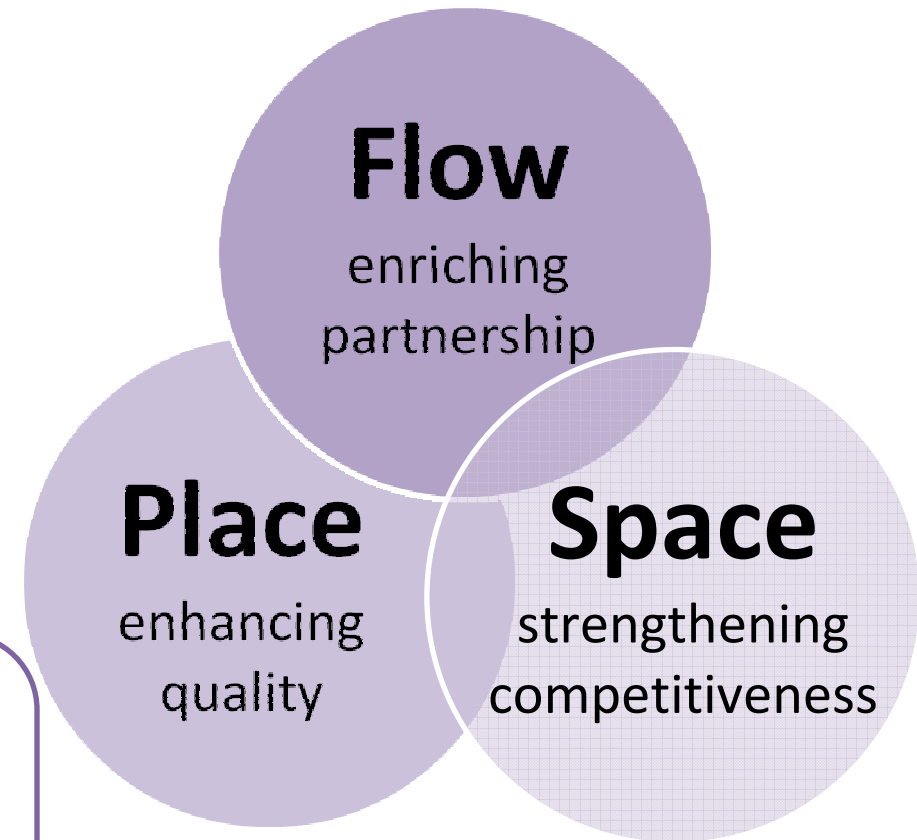
## Higher education system:

- space of places
- space of flows
- spheres of influence

### The issue of scale

- local
- regional
- national
- global/international

itude





**Dr Zhou Zhong**

Institute of Education

Tsinghua University

(Beijing, China)

[zhouzhong@tsinghua.edu.cn](mailto:zhouzhong@tsinghua.edu.cn)